

HAGO

Your best decision: our quality



www.hago.at

HAGODECK®
ACCESS COVERS

Our sole aim is your satisfaction.

We offer a high level of specialist skills, maximum product benefits, an ongoing quality control system and reliable delivery dates. And should you ever have a complaint, you have my personal assurance that it will be dealt with competently and quickly.

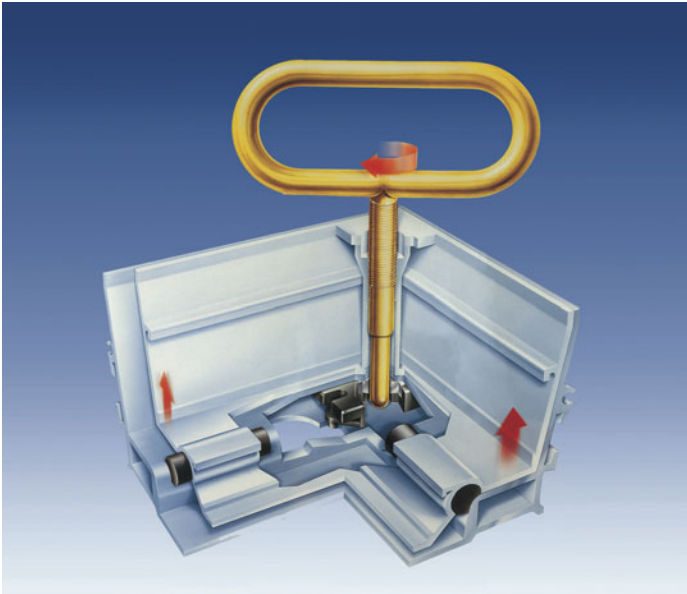


Yours sincerely, Udo Gossner
(Managing Director)

Page	Type / Content	Test load *)	Special sizes possible	sealed	Material
2	HAGO Philosophy/overview of types				
3/4/5	HAGO Know-How				
6	BV	125 kN	●	●	Galvanised steel
7	B	125 kN	●	-	Galvanised steel
8	BVA	125 kN	●	●	Aluminium
9	BVE	125 kN	●	●	Stainless steel
10	BV shallow/BVE shallow	pedestrian	●	●	Galvanised steel/Stainless steel
11	BV-F90	125 kN	●	● largely	Galvanised steel, with fire protection panel
12	BVS-250	250 kN	●	●	Galvanised steel
13	BVS-400	400 kN	●	●	Galvanised steel
14	BV-GD/BVE-GD automatic	125 kN	●	● largely	Galvanised steel/Stainless steel
15	BV-GDZ automatic	125 kN	●	● largely	Galvanised steel
16	Photos (BVE-GD automatic)				
17	Photos (BVH-GD maxi)				
18	BVH maxi	125 kN	●	●	Galvanised steel
19	BVH-GD maxi	125 kN	●	● largely	Galvanised steel
20	BVHS 250	250 kN	●	●	Galvanised steel
20	BVHS 400	400 kN	●	●	Galvanised steel
21	RV/RVE	15 kN	●	●	Galvanised steel/Stainless steel
22	RVA	15 kN	●	●	Aluminium
23	BR/RG	pedestrian	-	-	Galvanised steel
24	BV thermo	125 kN	●	●	Galvanised steel, with insulation panel
25	Multi-part cover	125 kN	●	● largely	Steel/Stainless steel
26	Multi-part cover	125 kN	●	● largely	Aluminium
28	FAQs - frequently asked questions				
29	FAQs - frequently asked questions				
30	Specification clauses				
31	Specification clauses				

Key: ● yes - no

*) Please read our tips on test loads and load-bearing capacity on pages 3 and 29.



The Golden Key:

The **HAGO advantage**. This key is worth its weight in gold. Why? The first pull is the problem. You will be used to this if you have ever had rusted screws. With just one twist of the Golden Key, the first pull is effortless.

Both installation staff (*when first opening*) and the subsequent user will really appreciate this feature.
(Photo: Golden Key Lift-Off system)



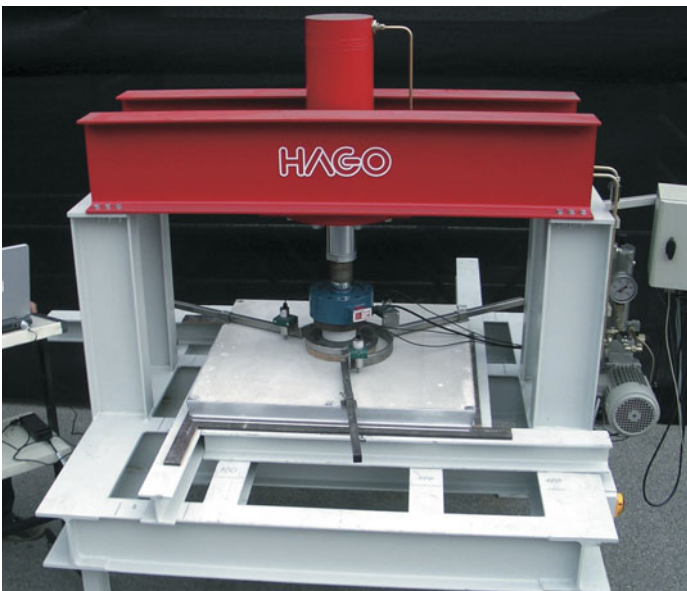
Test load / load capacity:

Our test certificates, from renowned, state-licensed testing and inspection authorities, are your peace of mind.

We guarantee that our standard covers, when completely filled with C 35/45 concrete (*European Standard EN 206-1*) will achieve the specified test load.

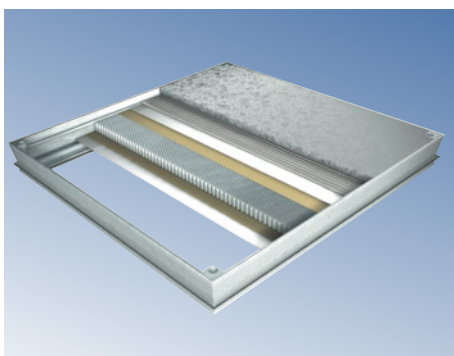
If a tiled finish or similar is used, the test loading will be reduced. With *type BVH-maxi, BVH-GD-maxi and BVHS 250/400* the full test load is achieved with a concrete thickness of 5 cm.

Please refer also to page 29.



Our own monitoring:

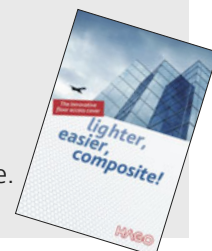
As part of product development and quality assurance, **HAGO** carries out load-bearing capacity tests with our own testing facility. We can thus guarantee optimal product features for all our serial products. (Photo: 125 kN EN 124 load-capacity test of a **HAGODECK BVA 88**)



Top innovations:

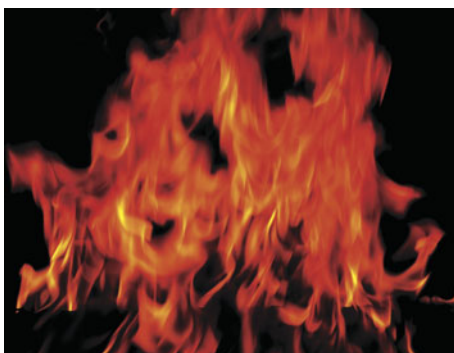
HAGODECK COMPOSITE: The modern, patented access cover. Composite aluminium honeycomb technology and adhesive technology as used in aircraft construction. No concrete filling required. No concrete weight, no concrete drying time.

Make a request for our composite brochure.



Precision-made:

Our covers are manufactured to great accuracy. We base our designs on EN Standard 22768-1 "Tolerance for length and corner dimensions".



Fire protection:

An official fire-test by the IBS in Linz, Austria, confirms that fire cannot pass through our **BV-F90 cover**.



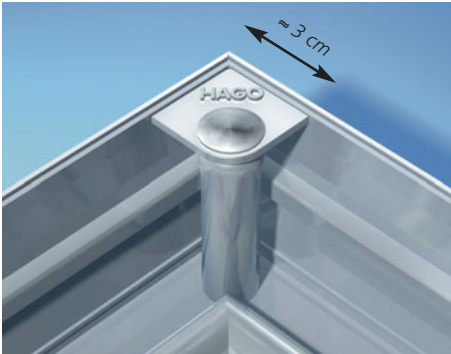
Stock:

We keep large stocks of all standard **HAGODECK** covers permanently available for you at our Wels warehouse, our Vienna branch and our dealers.



Packaging and Product Labelling:

Our standard covers are packed with specially designed cardboard corners for protection. These provide optimal protection during transport, and the minimum use of cardboard is environmentally sound. These cardboard corners are printed with the size and type of cover clearly visible, simplifying stock-control in the warehouse, at the dealer's or on site.



HAGO corners:

Our corner system is a simple, attractive interface between the lifting point and the floor finish.

They are exceptionally small and aesthetically pleasing to architects and designers, with minimum disturbance to the appearance of the floor finish. In the industry today, installers throughout Europe consider the discreet **HAGO** logo a sign of quality in covers.



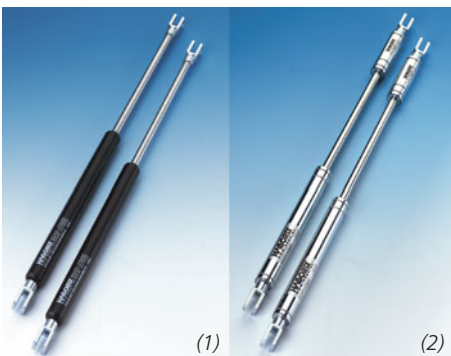
Installation instructions:

The instructions are distinctly coloured and hard to miss. The instructions are also very brief, so even those who normally wouldn't bother to read them are not deterred. Definitely worth a read - there are lots of useful tips for trouble-free installation.



Opening tools:

Every **HAGODECK** access cover comes with a complete set of opening tools. No need to order or pay for this separately. The tool set is firmly tied (*with cable ties*) to the cover to minimise loss in transit.



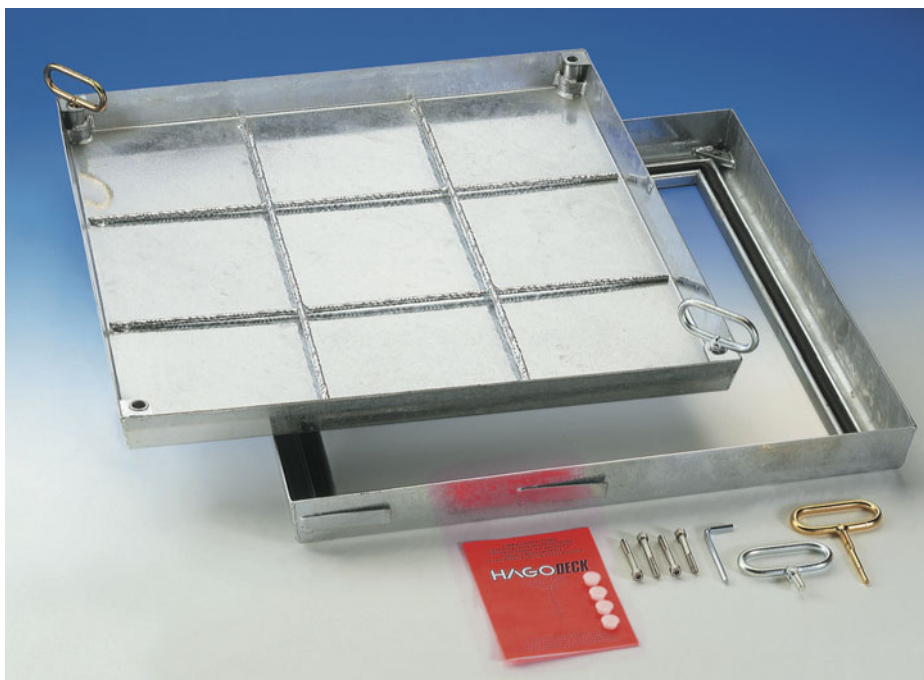
Gas lift-struts:

Covers which feature assisted opening are equipped with particularly high-specification gas struts. Our standard gas struts (1) are also extremely rugged and durable. For extra-heavy covers we use patented double-piston gas struts (2). These enable the covers to be lifted comfortably, despite being heavy. (see pages 16, 17 and 19)



Cross-beam system:

The patented **HAGO** cross-beam system is central to the success of our multi-part covers. These practical cross-beams can be removed without tools, make installation stable and largely watertight. (see also pages 25 to 27)



Load capacity: 125 kN test load EN 124 (see also pages 3 and 29).


Material: Frame and cover in 2 mm cold-formed precision steel profiles. Hot-dip galvanised.

Features: Accurately manufactured sealed access covers. Tapered design allows easy opening. Virtually invisible when installed. EPDM seal. Robust steel mesh reinforcement.

The Lift-Off opening system: Every **HAGO DECK Type BV steel** cover comes with a set of lifting keys and precise installation instructions. The **HAGO advantage:** jammed covers are released by simply turning the Golden Key.

Applications: Inside buildings or their surroundings, where sealed covers are required.

Installation: Installation must be carried out according to our instructions. With water-tight models, care must be taken to seal the outer frame into the surrounding flooring.

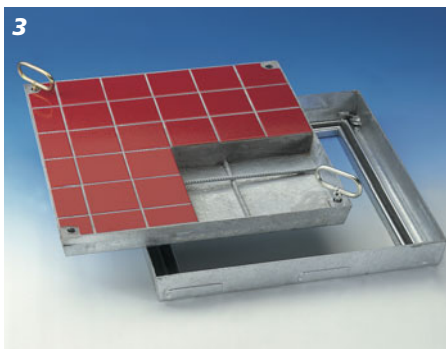
 **Specification clause:** page 30/31



1 Type BV over a manhole

2 Type BV in a cafe floor with a granite finish

3 Type BV partially filled with tiles



Type	Clear dimensions of shaft (≈ cm)	Outside dimensions (≈ cm)	Weight empty approx.	S/O *
	c x d	A x B		
BV 33	30 x 30	43.5 x 43.5	10 kg	S
BV 44	40 x 40	53.5 x 53.5	13 kg	S
BV 45	45 x 45	58.5 x 58.5	16 kg	S
BV 55	50 x 50	63.5 x 63.5	17 kg	S
BV 64	60 x 40	73.5 x 53.5	17 kg	S
BV 66	60 x 60	73.5 x 73.5	21 kg	S
BV 635	63.5 x 63.5	77.0 x 77.0	22 kg	S
BV 86	80 x 60	93.5 x 73.5	27 kg	S
BV 88	80 x 80	93.5 x 93.5	31 kg	S
BV 106	100 x 60	113.5 x 73.5	31 kg	S
BV 108	100 x 80	113.5 x 93.5	37 kg	S
BV 110	100 x 100	113.5 x 113.5	42 kg	S

Cover depth ≈ 5.0 cm

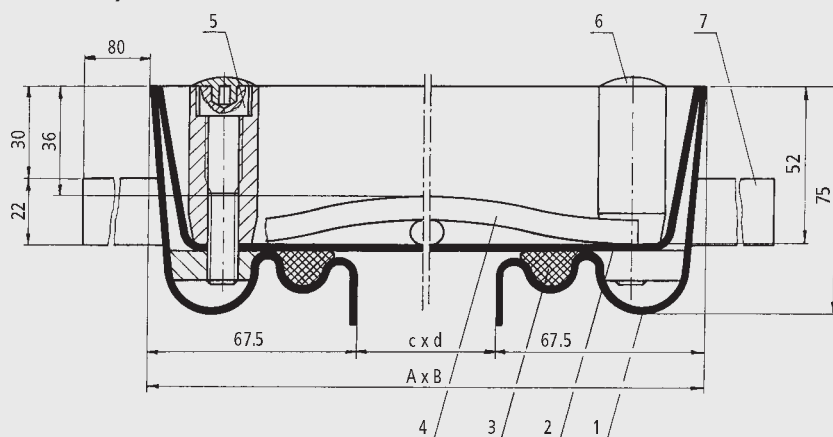
Installation height ≈ 7.5 cm

Special sizes possible

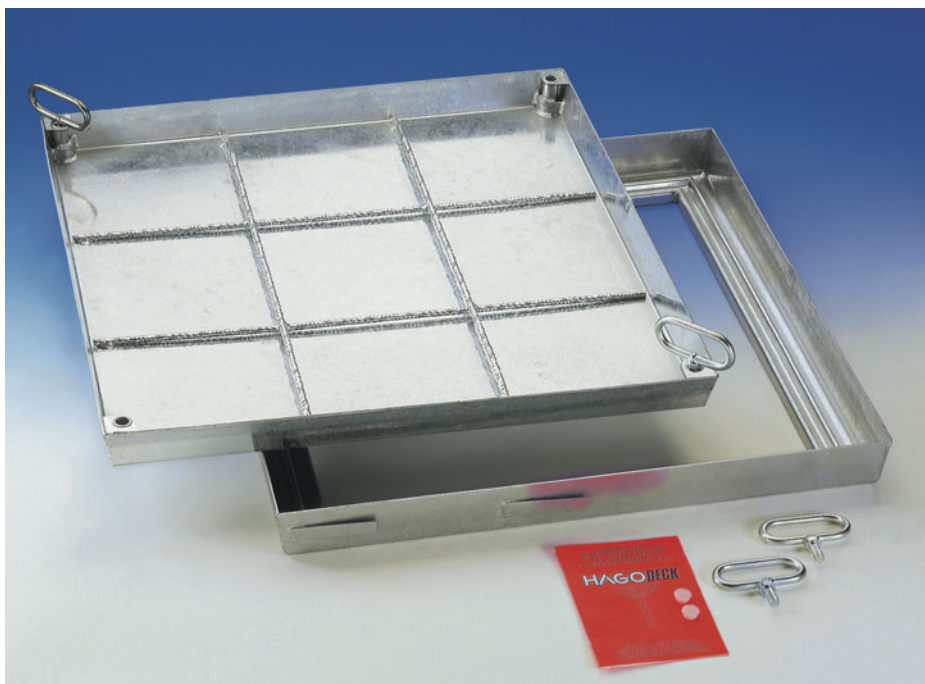
*S = available from stock

*O = to order

Type BV steel, scale 1 : 2.5



- 1 Frame
- 2 Cover
- 3 Seal
- 4 Reinforcement
- 5 Allen screw
- 6 Plastic cap
- 7 Anchor



Load capacity: 125 kN test load EN 124
(see also pages 3 and 29).

Material: Frame and cover in 2 mm cold-formed precision steel profiles. Hot-dip galvanised.

Features: Standard version (not sealed).

Type B should only be used where the "sealed" characteristic is **not** required. Tapered design allows easy opening. Virtually invisible when installed. Robust steel mesh reinforcement, crosswise welded.

Opening: Every **HAGO DECK Type B** steel cover comes with a set of lifting keys and precise installation instructions.

Applications: Inside buildings over sealed inspection fittings or installations where a fully sealed cover is **not** needed.

Installation: Installation must be carried out according to our instructions.

 **Specification clause:** page 30/31

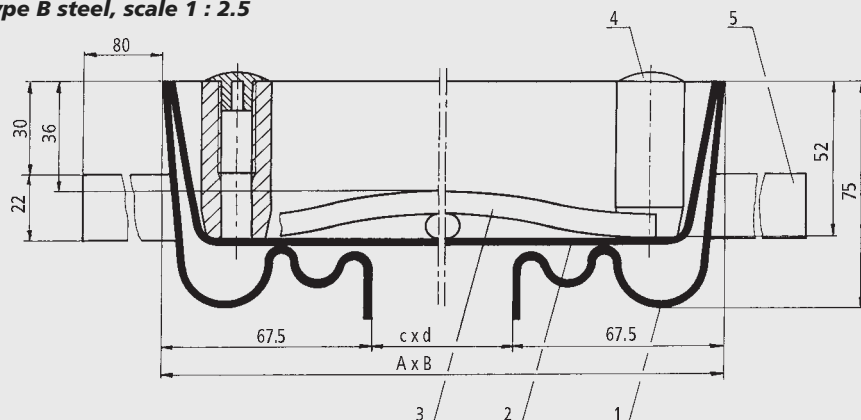


Type B
filled with a granite finish



Type B
Just pull up the cover to open

Type B steel, scale 1 : 2.5



Type	Clear dimensions of shaft (cm)		Outside dimensions (cm)	Weight empty approx.	S/O*
	c x d		A x B		
B 55	50	x 50	63.5 x 63.5	15 kg	S
B 64	60	x 40	73.5 x 53.5	15 kg	S
B 66	60	x 60	73.5 x 73.5	19 kg	S
B 635	63.5	x 63.5	77.0 x 77.0	20 kg	S
B 86	80	x 60	93.5 x 73.5	23 kg	S
B 88	80	x 80	93.5 x 93.5	29 kg	S

Cover depth ≈ 5.0 cm

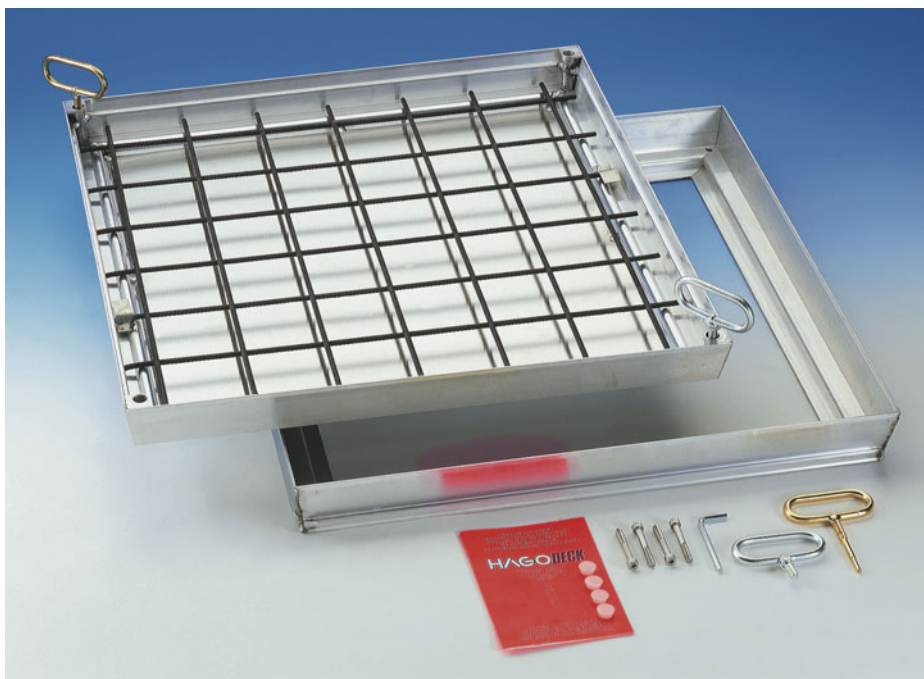
Installation height ≈ 7.5 cm

Special sizes possible

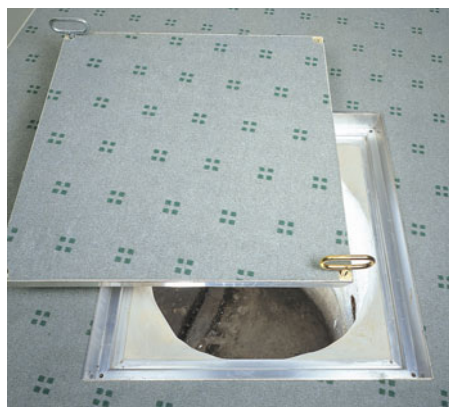
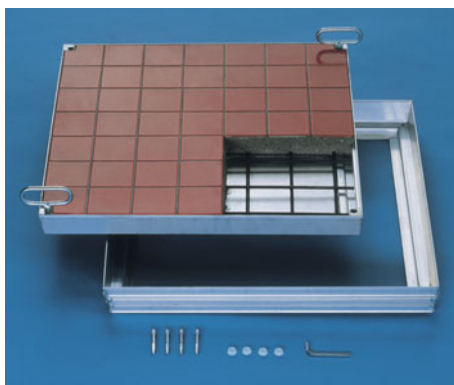
*S = available from stock

*O = to order

- 1 Frame
- 2 Cover
- 3 Reinforcement
- 4 Plastic cap
- 5 Anchor

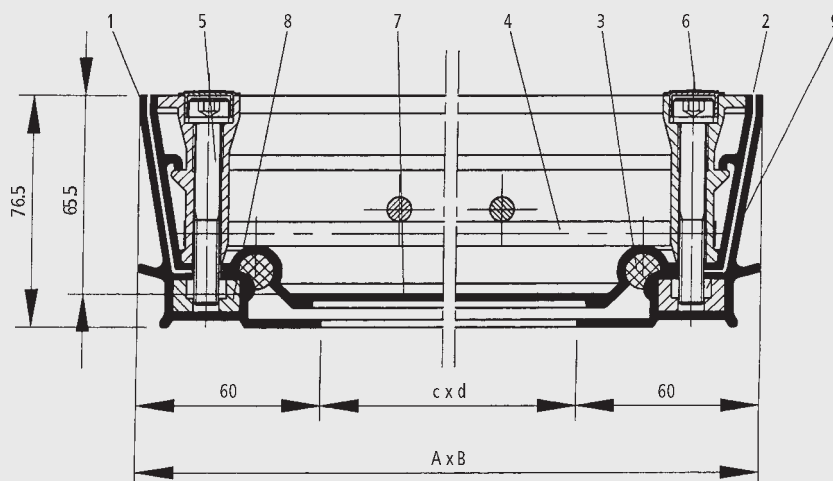


Type BVA
installed in an office (over a manhole),
in a carpeted area



Type BVA
partially filled with tiles

Type BVA alu, scale 1 : 2.5



Load capacity: 125 kN test load EN 124
(see also pages 3 and 29).

Material: Frame and cover sections in extruded aluminium. Stainless steel screws.

Features: Sealed access cover in high-quality finish. Very attractive surface, the visible edges are particularly attractive. Therefore these covers are particularly suitable where a look of elegance is required. Very easy-to-open design. Robust corner joints guarantee a very high degree of rigidity and make it easier to lay tiles and ceramic finishes. EPDM seal. The cover is reinforced with a clamped steel mesh reinforcement.

The Lift-Off opening system: Every **HAGO DECK Type BVA alu** cover comes with a set of lifting keys and precise installation instructions. The **HAGO advantage:** jammed covers are released by simply turning the Golden Key.

Applications: Inside buildings where it is important to obtain a nice visual effect. Also, in places where floor finishes may need polishing after fixing or where particular attention needs to be given to corrosion resistance.

Installation: Installation must be carried out according to our instructions. With water-tight models, care must be taken to seal the outer frame into the surrounding flooring and to fill the cover with water-tight concrete.

 **Specification clause:** page 30/31

Type	Clear dimensions of shaft (≈ cm)	Outside dimensions (≈ cm)	Weight approx.	S/O*
c x d		A x B		
BVA 22	20 x 20	32 x 32	3 kg	S
BVA 33	30 x 30	42 x 42	5 kg	S
BVA 44	40 x 40	52 x 52	7 kg	S
BVA 45	45 x 45	57 x 57	8 kg	S
BVA 55	50 x 50	62 x 62	9 kg	S
BVA 64	60 x 40	72 x 52	9 kg	S
BVA 66	60 x 60	72 x 72	10 kg	S
BVA635	63.5 x 63.5	75.5 x 75.5	11 kg	S
BVA 77	70 x 70	82 x 82	12 kg	S
BVA 86	80 x 60	92 x 72	12 kg	S
BVA 88	80 x 80	92 x 92	15 kg	S
BVA106	100 x 60	112 x 72	15 kg	S
BVA108	100 x 80	112 x 92	21 kg	S
BVA110	100 x 100	112 x 112	23 kg	S

Cover depth ≈ 6.6 cm

Installation height ≈ 7.6 cm

Special sizes possible

*S = available from stock

*O = to order

- | | |
|-----------------|-------------------|
| 1 Frame | 6 Plastic cap |
| 2 Cover | 7 Base plate |
| 3 Seal | 8 Die cast corner |
| 4 Reinforcement | 9 Square boss |
| 5 Allen screw | |



Load capacity: 125 kN test load EN 124
(see also pages 3 and 29).


Material: Grade 304 stainless steel. Passivated after welding. Also available in grade 316 stainless steel on request (*no stock item*).

Features: Accurately manufactured fully sealed access covers. Tapered design allows easy opening. Virtually invisible when installed. EPDM seal.

The Lift-Off opening system: Every **HAGO DECK Type BVE stainless steel** cover comes with a set of lifting keys and precise installation instructions. The **HAGO advantage:** jammed covers are released by simply turning the Golden Key.

Applications: Inside buildings or their surroundings, where exceptionally high standards are needed or where the hygienic properties of stainless steel are preferred, e.g. in the food industry, in meat-processing areas, dairies, hospitals, swimming pools. For indoor swimming pools only use grade 316 material!

Installation: Installation must be carried out according to our instructions. With water-tight models, care must be taken to seal the outer frame into the surrounding flooring.

 **Specification clause:** page 30/31



Type BVE
In use in a food processing plant

Type	Clear dimensions of shaft (≈ cm)	Outside dimensions (≈ cm)	Weight empty approx.	S/O*
	c x d	A x B		
BVE 22	20 x 20	33.5 x 33.5	6 kg	S
BVE 33	30 x 30	43.5 x 43.5	9 kg	S
BVE 44	40 x 40	53.5 x 53.5	13 kg	S
BVE 55	50 x 50	63.5 x 63.5	17 kg	S
BVE 64	60 x 40	73.5 x 53.5	16 kg	S
BVE 66	60 x 60	73.5 x 73.5	20 kg	S
BVE 86	80 x 60	93.5 x 73.5	24 kg	S
BVE 88	80 x 80	93.5 x 93.5	30 kg	S
BVE106	100 x 60	113.5 x 73.5	29 kg	S
BVE108	100 x 80	113.5 x 93.5	33 kg	S
BVE110	100 x 100	113.5 x 113.5	40 kg	S

Cover depth ≈ 5.0 cm
Installation height ≈ 7.5 cm

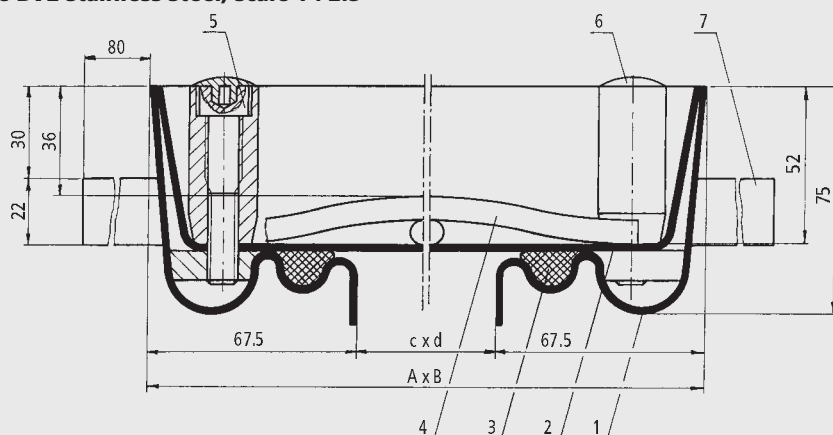
Special sizes possible

*S = available from stock

*O = to order

- 1 Frame
- 2 Cover
- 3 Seal
- 4 Reinforcement
- 5 Allen screw
- 6 Plastic cap
- 7 Anchor

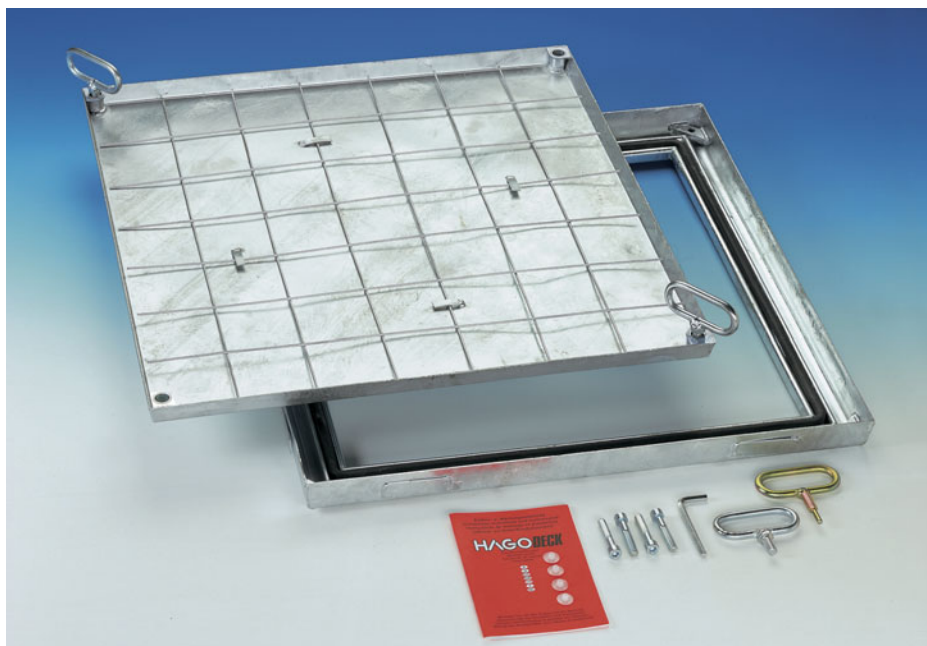
Type BVE stainless steel, scale 1 : 2.5



Type BV-shallow steel

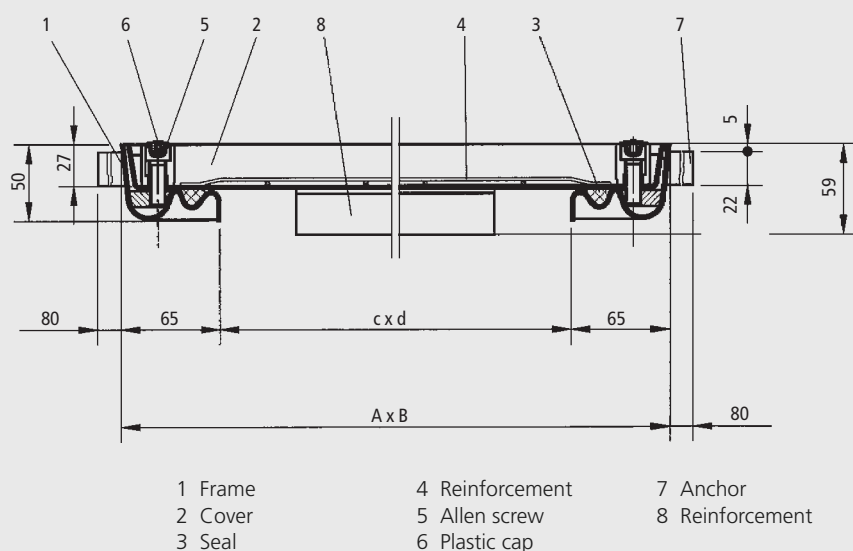
Type BVE-shallow stainless steel

Sealed cover



Type BV shallow
The bottom of the cover is reinforced

Type BV-shallow steel, scale 1 : 5



Load capacity: pedestrian

Material:

BV-shallow: frame and cover in 2mm cold formed precision steel profiles, hot-dip galvanised.

BVE-shallow: frame and cover made of grade 304 stainless steel.

Features: Sealed. Cover with an **installation depth of only 5 cm.**

Particularly suitable for situations where greater installation depth is not available. Since the cover is shallower, this means that it is not so heavy when filled in - so less effort is required to lift the cover.

The bottom of the cover is reinforced. EPDM seal. Tapered design allows easy opening. Steel reinforcement guarantees good adhesion between the concrete infill and the bottom of the cover.

The Lift-Off opening system:

Every HAGO DECK Type BV(E) shallow cover comes with a set of lifting keys and clear installation instructions.

The **HAGO advantage:** jammed covers are released by simply turning the Golden Key.

Applications: For pedestrian use inside buildings and their surroundings.

Installation: Installation must be carried out according to our instructions. With water-tight models, care must be taken to seal the outer frame into the surrounding flooring.

 **Specification clause:** page 30/31

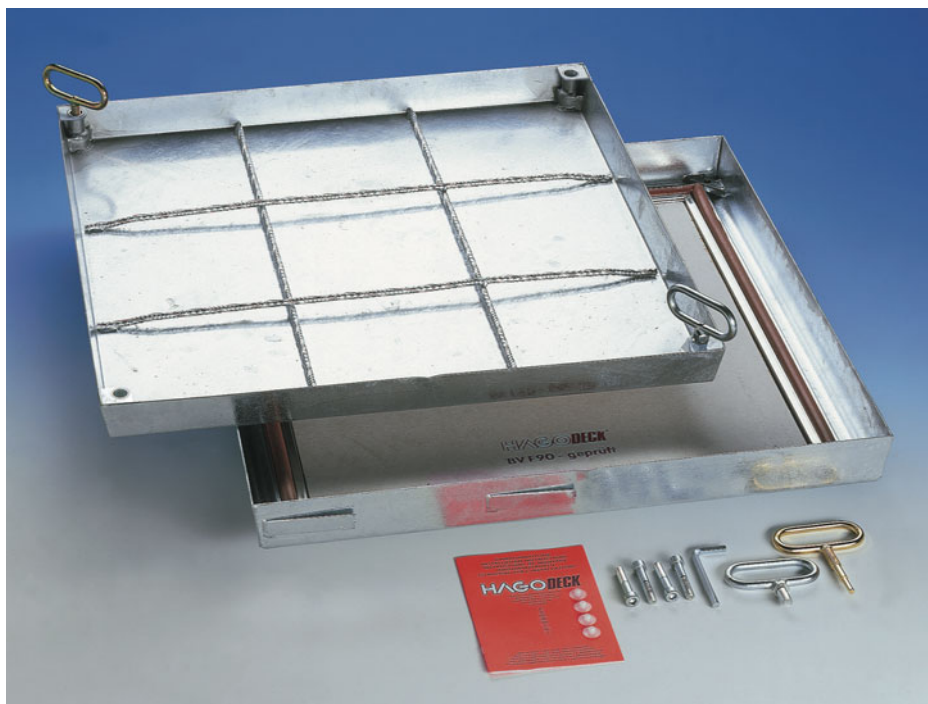
Type	Clear dimensions of shaft (≈ cm)	Outside dimensions (≈ cm)	Weight empty approx.	S/O *
	c x d	A x B		
Galvanised steel				
BV shallow 22	20 x 20	33 x 33	5 kg	S
BV shallow 33	30 x 30	43 x 43	8 kg	S
BV shallow 44	40 x 40	53 x 53	12 kg	S
BV shallow 55	50 x 50	63 x 63	15 kg	S
BV shallow 64	60 x 40	73 x 53	15 kg	S
BV shallow 66	60 x 60	73 x 73	19 kg	S
BV shallow 86	80 x 60	93 x 73	24 kg	S
BV shallow 88	80 x 80	93 x 93	28 kg	S
BV shallow 106	100 x 60	103 x 73	27 kg	S
Stainless steel grade 304, passivated				
BVE shallow 22	20 x 20	33 x 33	5 kg	S
BVE shallow 33	30 x 30	43 x 43	8 kg	S
BVE shallow 44	40 x 40	53 x 53	12 kg	S
BVE shallow 55	50 x 50	63 x 63	15 kg	S
BVE shallow 64	60 x 40	73 x 53	15 kg	S
BVE shallow 66	60 x 60	73 x 73	19 kg	S
BVE shallow 86	80 x 60	93 x 73	24 kg	S
BVE shallow 88	80 x 80	93 x 93	28 kg	S
BVE shallow 106	100 x 60	103 x 73	27 kg	S

Cover depth ≈ 2.7 cm,
Installation height ≈ 5.0 cm

Special sizes possible

*S = available from stock

*O = to order



Load capacity: 125 kN test load EN 124
(see also pages 3 and 29).

Material: Frame and cover in 2 mm cold-formed precision steel profiles. Hot-dip galvanised. Fire protection panel on stainless steel Z brackets, fire-resistant seal.

Features: Accurately-manufactured smell proof access cover. Tapered design allows easy opening. Virtually invisible when installed. Robust steel mesh reinforcement.

Fire test certificate: The Austrian test certificate issued by the Institute for Fire Protection Technology and Safety Research (IBS) confirms that **HAGO DECK Type BV-F90 steel** resists a fire for 90 minutes and thus significantly contributes to safety in the event of a fire.

In accordance with EN 13501-2, Type BV-F90 is classified in fire resistance class REI 90 (a↔b).

The Lift-Off opening system: Every HAGO DECK Type BV-F90 steel cover comes with a set of lifting keys and precise installation instructions. After lifting out the cover, the fire protection panel can be removed using its grab handle. The shaft is then accessible without restriction. The **HAGO advantage:** jammed covers are released by simply turning the Golden Key.

Applications: Access covers inside buildings that are required to be fire-resistant.

Installation: Installation must be carried out according to our instructions. With water-tight models, care must be taken to seal the outer frame into the surrounding flooring.

Specification clause: page 30/31



Type BV-F90
Detail: grab handle for removing the fire protection panel



Type BV-F90
underside

Other versions available in fire-proof finish (including test certificate):

- **Stainless steel access covers**
See price list: Type BVE-F90
- **Multi-part covers**
(on request)
- **Access covers with gas struts for assisted opening**
(on request)

Type	Clear dimensions of shaft (≈ cm)	Outside dimensions (≈ cm)	Weight empty approx.	S/O *
	c x d	A x B		
BV-F90 33	30 x 30	43.5 x 43.5	13 kg	S
BV-F90 45	45 x 45	58.5 x 58.5	21 kg	S
BV-F90 55	50 x 50	63.5 x 63.5	23 kg	S
BV-F90 64	60 x 40	73.5 x 53.5	23 kg	S
BV-F90 66	60 x 60	73.5 x 73.5	30 kg	S
BV-F90 635	63.5 x 63.5	77.0 x 77.0	32 kg	S
BV-F90 86	80 x 60	93.5 x 73.5	38 kg	S
BV-F90 88	80 x 80	93.5 x 93.5	45 kg	S
BV-F90 106	100 x 60	113.5 x 73.5	45 kg	S
BV-F90 108	100 x 80	113.5 x 93.5	54 kg	S
BV-F90 110	100 x 100	113.5 x 113.5	63 kg	S

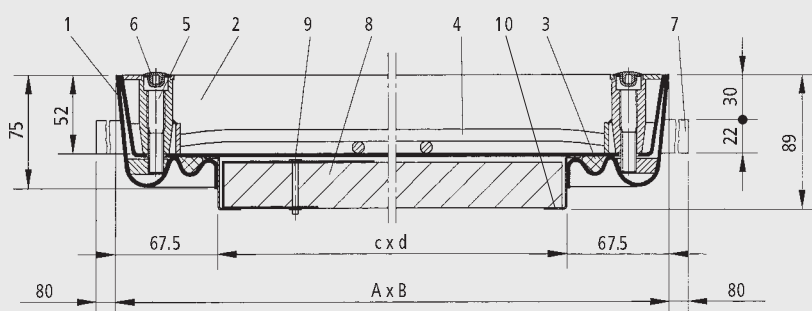
Cover depth ≈ 5.0 cm
Installation height ≈ 7.5 cm

Special sizes possible

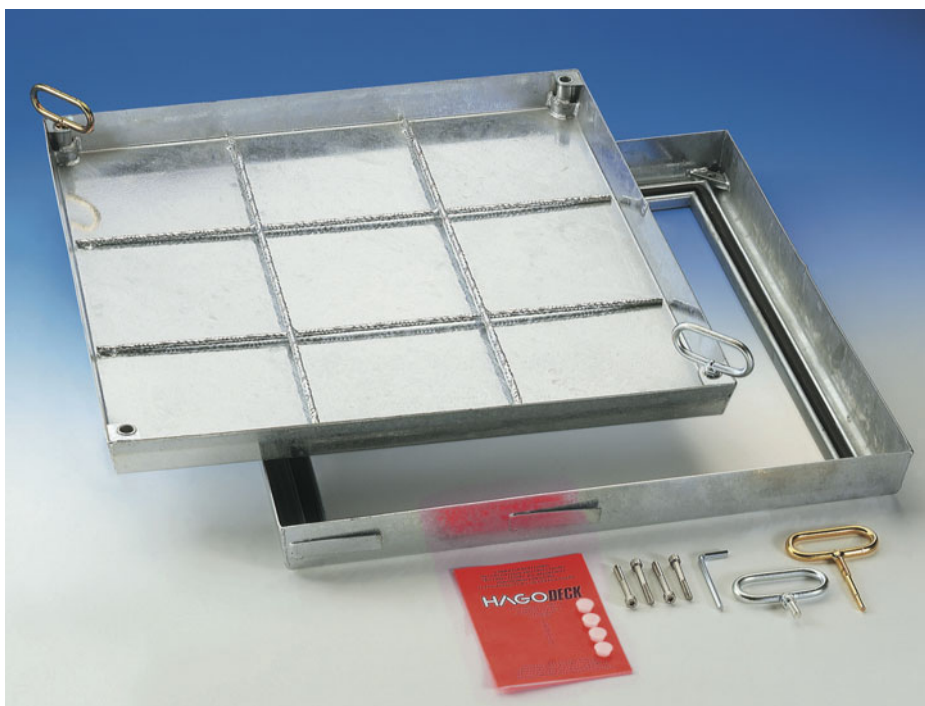
*S = available from stock

*O = to order

Type BV-F90 steel, scale 1 : 5



- | | |
|-------------------------|--------------------------------|
| 1 Frame | 7 Anchor |
| 2 Cover | 8 Fire protection panel |
| 3 Seal (fire-resistant) | 9 Grab handle with blind rivet |
| 4 Reinforcement | 10 Stainless steel Z-bracket |
| 5 Allen screw | |
| 6 Plastic cap | |



Load capacity: 250 kN test load EN 124 when completely filled with concrete C 35/45 (EN 206) (see also pages 3 and 29).

Material: Frame and cover made of steel plate, hot-dip galvanised.

Features: Heavy duty sealed cover. Under-side of cover reinforced with steel I-beam section.. Robust steel mesh reinforcement. EPDM seal. Tapered design allows easy opening.

The Lift-Off opening system: Every HAGO DECK Type BVS-250 steel cover comes with a set of lifting keys and precise installation instructions.

The **HAGO advantage:** jammed covers are released by simply turning the Golden Key.

Applications: For vehicle traffic areas in industrial buildings and their surrounding areas, where the cover needs to be heavy duty.

Installation: Installation must be carried out according to our instructions. With water-tight models, care must be taken to seal the outer frame into the surrounding flooring.

 **Specification clause:** page 30/31



Type BVS-250
The bottom of the cover is reinforced with I-beam section and flat steel

Type	Clear dimensions of shaft (≈ cm)	Outside dimensions (≈ cm)	Weight empty approx.	S/O *
	c x d	A x B		
BVS 250/ 44	40 x 40	53.5 x 53.5	17 kg	S
BVS 250/ 55	50 x 50	63.5 x 63.5	26 kg	S
BVS 250/ 64	60 x 40	73.5 x 53.5	25 kg	S
BVS 250/ 66	60 x 60	73.5 x 73.5	31 kg	S
BVS 250/ 86	80 x 60	93.5 x 73.5	38 kg	O
BVS 250/ 88	80 x 80	93.5 x 93.5	52 kg	S
BVS 250/106	100 x 60	113.5 x 73.5	52 kg	S
BVS 250/110	100 x 100	113.5 x 113.5	78 kg	S

Cover depth ≈ 5.0 cm

Installation height ≈ 7.5 cm

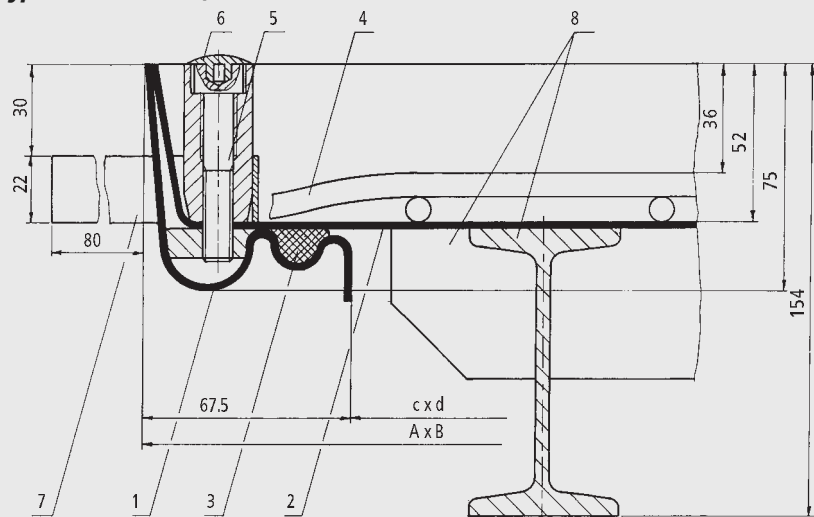
Steel girders penetrate ≈ 10 cm into the shaft

Special sizes possible

*S = available from stock

*O = to order

Type BVS-250 steel, scale 1 : 2.5



- 1 Frame
- 2 Cover
- 3 Seal
- 4 Reinforcement
- 5 Allen screw
- 6 Plastic cap
- 7 Anchor
- 8 Reinforcement



Type BVS-400 steel

Extra heavy duty, sealed cover



Load capacity: 400 kN test load EN 124 when completely filled with concrete C 35/45 (EN 206) (see also pages 3 and 29).

Material: Frame and cover made of steel plate, hot-dip galvanised.

Features: Heavy duty sealed cover. Under-side of cover reinforced with steel I-beam section and additional frame. Robust steel mesh reinforcement. EPDM seal. Tapered design allows easy opening.

The Lift-Off opening system: Every HAGO DECK Type BVS-400 steel cover comes with a set of lifting keys and precise installation instructions.

The **HAGO advantage:** jammed covers are released by simply turning the Golden Key.

Applications: For vehicle traffic areas in industrial buildings and their surrounding areas, or for secondary traffic areas.

Particularly suitable for use in areas where forklifts operate.

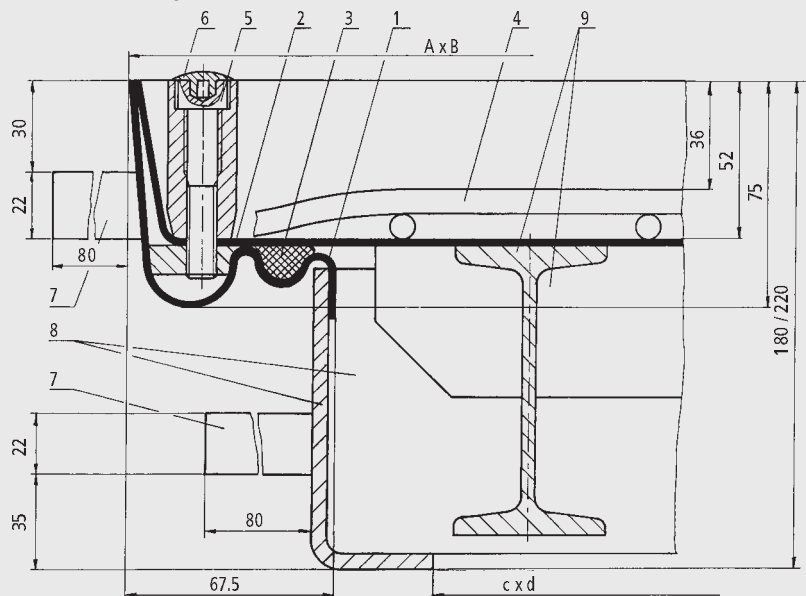
Installation: Installation must be carried out according to our instructions. With water-tight models, care must be taken to seal the outer frame into the surrounding flooring.

 **Specification clause:** page 30/31



Type BVS-400
Bottom with additional frame, reinforced with I-beam section and flat steel

Type BVS-400 steel, scale 1 : 2.5



Type	Clear dimensions of shaft (≈ cm)	Outside dimensions (≈ cm)	Weight	S/O*
	c x d	A x B		
BVS 400/ 55	50 x 50	63.5 x 71.5	52 kg	S
BVS 400/ 64	60 x 40	73.5 x 61.5	50 kg	S
BVS 400/ 66	60 x 60	73.5 x 81.5	62 kg	S
BVS 400/ 86	80 x 60	93.5 x 81.5	88 kg	O
BVS 400/ 88	80 x 80	93.5 x 101.5	103 kg	S
BVS 400/106	100 x 60	113.5 x 81.5	119 kg	O
BVS 400/108	100 x 80	113.5 x 101.5	147 kg	O
BVS 400/110	100 x 100	113.5 x 121.5	175 kg	S

Cover depth ≈ 5.0 cm

Installation heights: up to BVS 400/ 88 ≈ 18 cm

BVS 400/110 ≈ 22 cm

Special sizes possible

*S = available from stock

*O = to order

- 1 Frame
- 2 Cover
- 3 Seal
- 4 Reinforcement
- 5 Allen screw
- 6 Plastic cap
- 7 Anchor
- 8 Frame reinforcement (additional frame)
- 9 Reinforcement

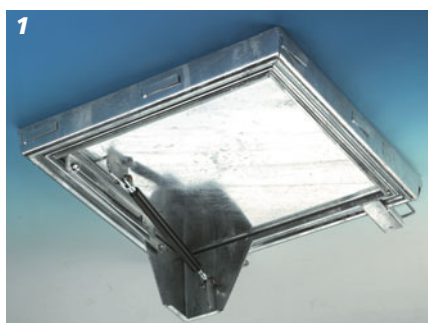


Load capacity: 125 kN test load EN 124
(see also pages 3 and 29).

Material: Frame and cover made of 2 mm cold-formed precision steel profiles, hot-dip galvanised. Or in grade 304 stainless steel, passivated. Stainless steel hinges. High-specification gas strut(s).

Features: Comfort-lift access cover. Smell proof, largely water-tight (*not guaranteed to be completely water-tight*). EPDM seal. Opening tools included. Opening is assisted by the gas strut(s) to such an extent that the BV-GD/BVE-GD cover can be opened and closed by one person. Safety device fitted to prevent the open cover from closing.

Applications: As a cover over installations that need to be opened frequently, without particular effort. Particularly for inspection chambers. BVE-GD is particularly recommended over plant in swimming pool areas. For indoor swimming pools only use grade 316 material!



1 underside
Type BV-GD 66



2 Type BV-GD 88
built into a swimming pool area



3 Type BV-GD
built into terrace



4 Detail: gas strut and safety device

Installation: Please study the enclosed installation instructions **carefully before installation** and pay attention to our specifications. Care must be taken to seal the outer frame into the surrounding flooring.

Important note: The gas strut(s) are not installed for transport-related reasons. These should be installed after the cover and frame have been installed and filled (*concrete must be set*), in the open position in accordance with our installation instructions.

 **Specification clause:** page 30/31

Type	Clear dimensions of shaft (≈ cm)	Outside dimensions without anchor (≈ cm)	Weight empty approx.	S/O *
	c x d	A x B		
Galvanised steel				
BV-GD 66	60 x 60	73.5 x 75.15	29 kg	S
BV-GD 86	80 x 60	93.5 x 75.15	36 kg	S
BV-GD 88	80 x 80	93.5 x 95.15	42 kg	S
BV-GD106	100 x 60	113.5 x 75.15	40 kg	S
BV-GD110	100 x 100	113.5 x 115.15	55 kg	S
Stainless steel grade 304, passivated				
BVE-GD66	60 x 60	73.5 x 75.15	28 kg	S
BVE-GD86	80 x 60	93.5 x 75.15	35 kg	S
BVE-GD88	80 x 80	93.5 x 95.15	41 kg	S
BVE-GD106	100 x 60	113.5 x 75.15	40 kg	O
BVE-GD110	100 x 100	113.5 x 115.15	53 kg	S

Cover depth ≈ 5.0 cm, Installation height ≈ 7.5 cm

Special sizes possible

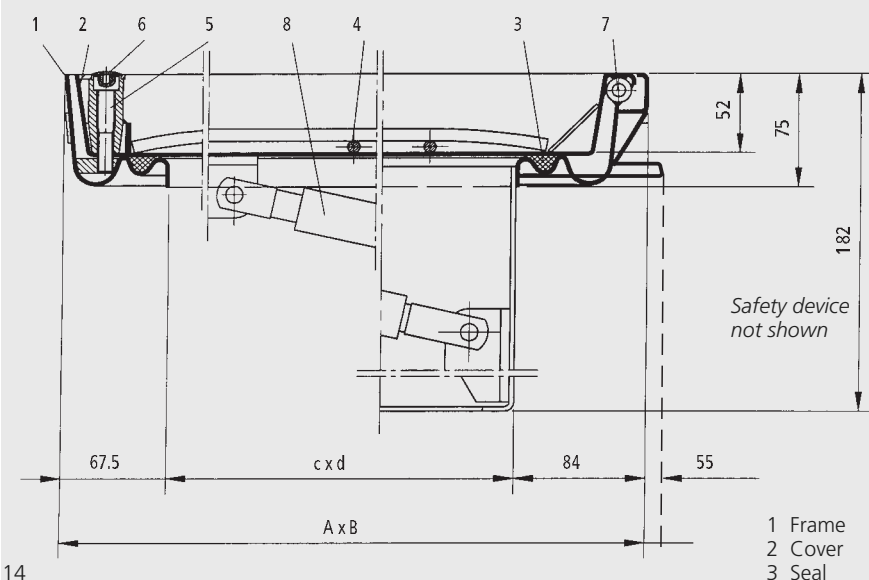
*S = available from stock

*O = to order

Number of gas struts

Size:	60 x 60	1
Size:	80 x 60	2
Size:	80 x 80	2
Size:	100 x 60	2
Size:	100 x 100	2

Type BV-GD steel/BVE-GD stainless steel, scale 1 : 5



Type BV-GDZ automatic steel

Hinged, central lock cover with gas-strut lift

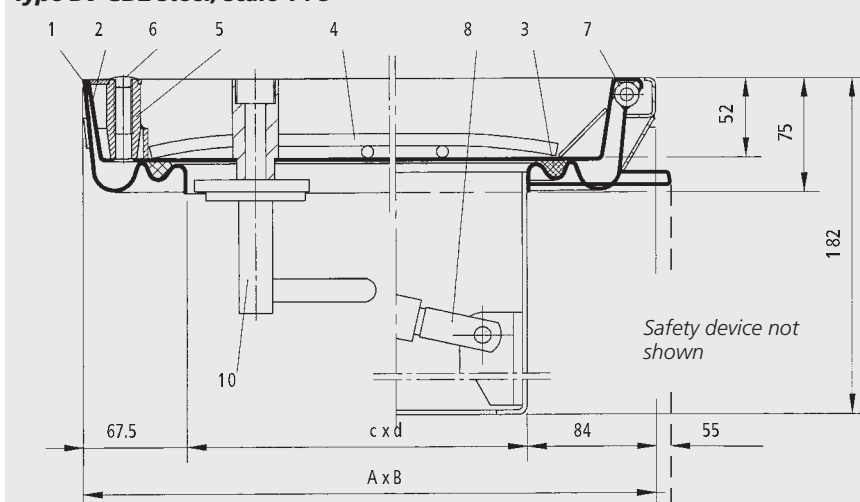


Type BV-GDZ
To be opened from the underside
with the central lock



Type BV-GDZ
Detail: central lock from underneath

Type BV-GDZ steel, scale 1 : 5



Load capacity: 125 kN test load EN 124
(see also pages 3 and 29).

Material: Frame and cover made of 2 mm cold-formed precision steel profiles, hot-dip galvanised. Stainless steel hinges. High-specification gas strut(s).

Features: Comfort-lift access cover. Smell proof (not guaranteed to be completely water-tight). Virtually invisible when installed. EPDM seal. Opening tools included. Opening is assisted by the gas strut(s) to such an extent that the BV-GDZ cover can be opened and closed by one person.

Central locking system: HAGODECK Type BV-GDZ steel cover is equipped with a central locking system. The cover can be opened from above using a special socket key and easily unlocked from underneath using the built-in handle. Safety device fitted to prevent the open cover from closing.

Applications: For covers that need to be opened from above and below, quickly and without particular effort, e.g. in underground passageways, in underground railways, power stations, telecommunication or military facilities etc.
Not permitted to be used as emergency exit hatches (escape routes)!

Installation: Please study the enclosed installation instructions **carefully before installation** and pay attention to our specifications. Care must be taken to seal the outer frame into the surrounding flooring. **Important note:** The gas strut(s) are not installed for transport-related reasons. These should be installed after the cover and frame have been installed and filled (concrete must be set), in the open position in accordance with our installation instructions.

 **Specification clause:** page 30/31

Type	Clear dimensions of shaft (≈ cm)	Outside dimensions without anchor (≈ cm)	Weight empty approx.	S/O*
c x d		A x B		
BV-GDZ 66	60 x 60	73.5 x 75.15	30 kg	S
BV-GDZ 86	80 x 60	93.5 x 75.15	38 kg	S
BV-GDZ 88	80 x 80	93.5 x 95.15	44 kg	S
BV-GDZ110	100 x 100	113.5 x 115.15	58 kg	S

Cover depth ≈ 5.0 cm, Installation height ≈ 8 cm

Special sizes possible

*S = available from stock

*O = to order

Number of gas struts

Size: 60 x 60 1

Size: 80 x 60 2

Size: 80 x 80 2

Size: 100 x 100 2

- | | |
|-----------------|-----------------|
| 1 Frame | 6 Plastic cap |
| 2 Cover | 7 Anchor |
| 3 Seal | 8 Hinge |
| 4 Reinforcement | 9 Gas strut |
| 5 Lifting boss | 10 Central lock |



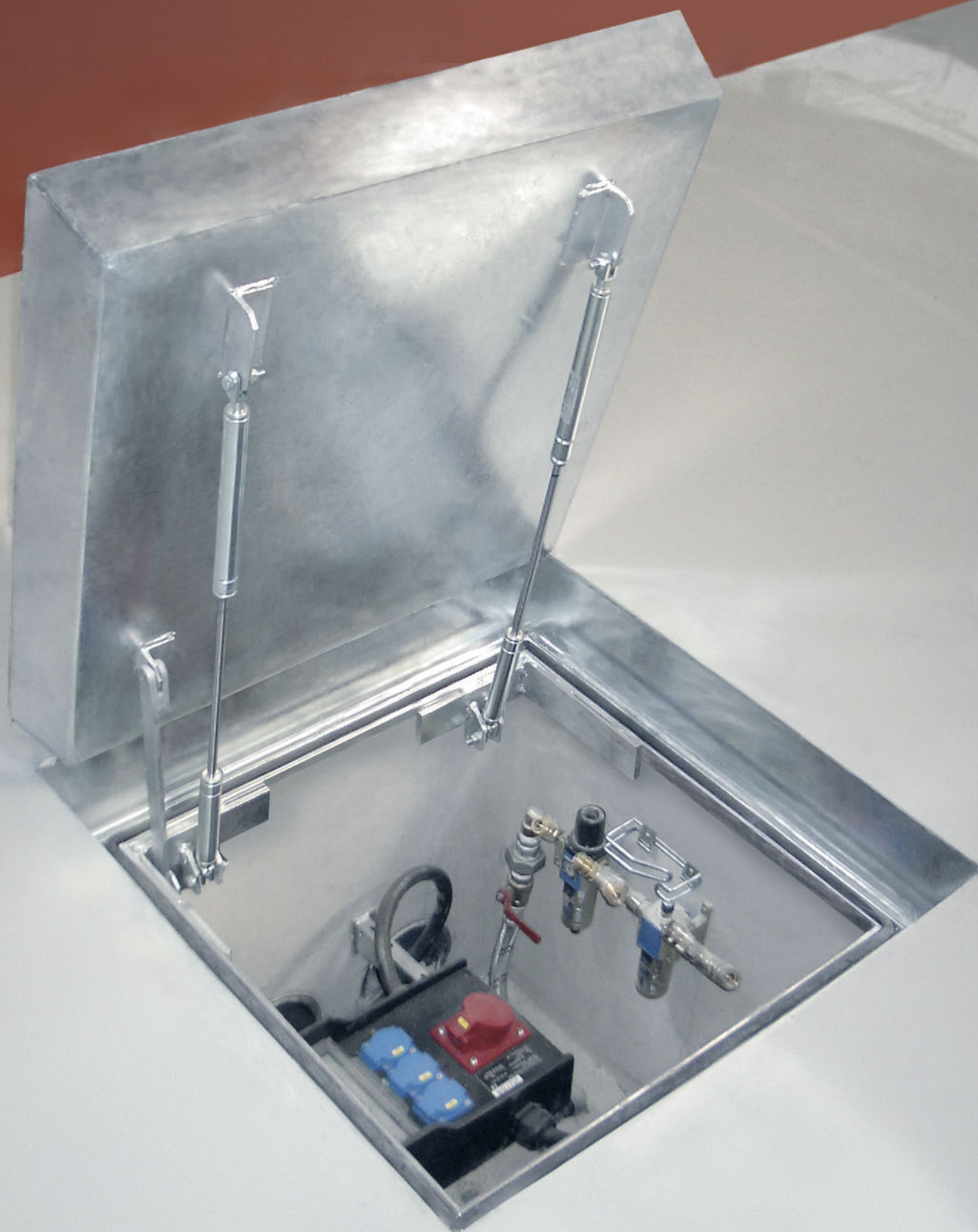
Gas lift-struts

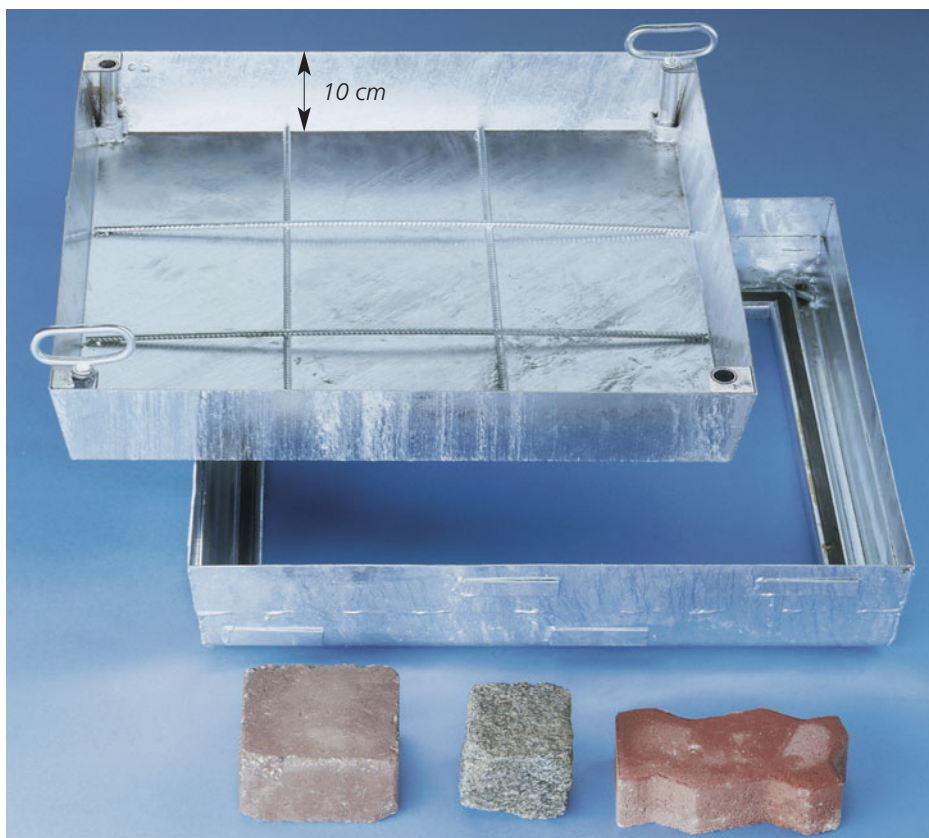


BVE-GD for swimming pool



BVE-GD in family home





Load capacity: 125 kN test load (EN 124) when filled with a min. 5 cm layer of grade C 35/45 concrete (EN 206) (see also pages 3 and 29).

Material: Frame and cover in 2 mm cold-formed precision steel profiles. Hot-dip galvanised.

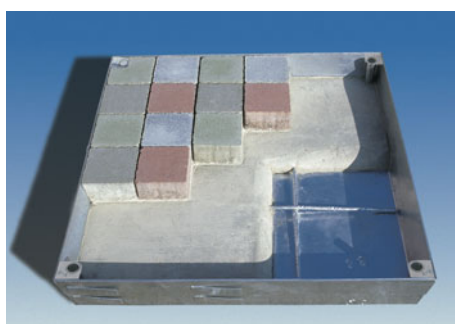
Features: Sealed cover with 10 cm deep recess. Virtually invisible when installed. EPDM seal. Robust steel mesh reinforcement, cross-wise welded. Opening tool included.

The Lift-Off opening system: Every HAGO DECK Type BVH-maxi steel cover comes with a set of lifting keys and clear installation instructions. The **HAGO advantage:** jammed covers are released by simply turning the Golden Key.

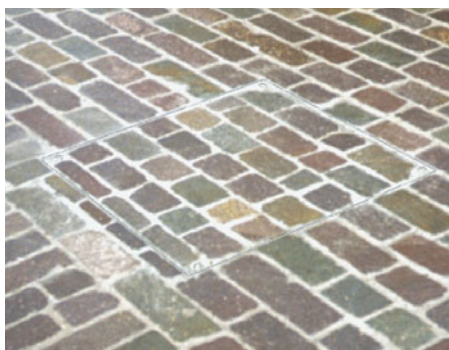
Applications: Inside buildings and their surroundings. Especially for those installations where the cover is to be filled with concrete slabs, bricks, paviors etc.

Installation: Installation must be carried out according to our instructions. With water-tight models, care must be taken to seal the outer frame into the surrounding flooring.

 **Specification clause:** page 30/31



Type BVH-maxi
partially filled with coloured paviors

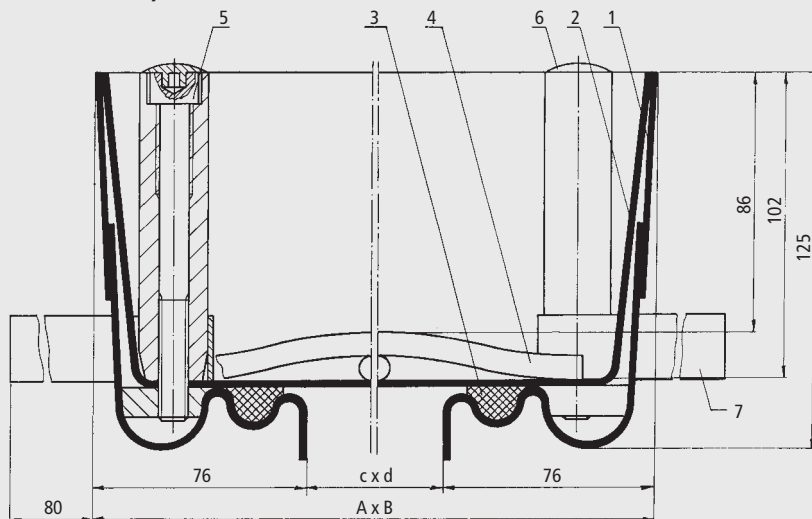


Type BVH-maxi
filled with paviors, practically invisible

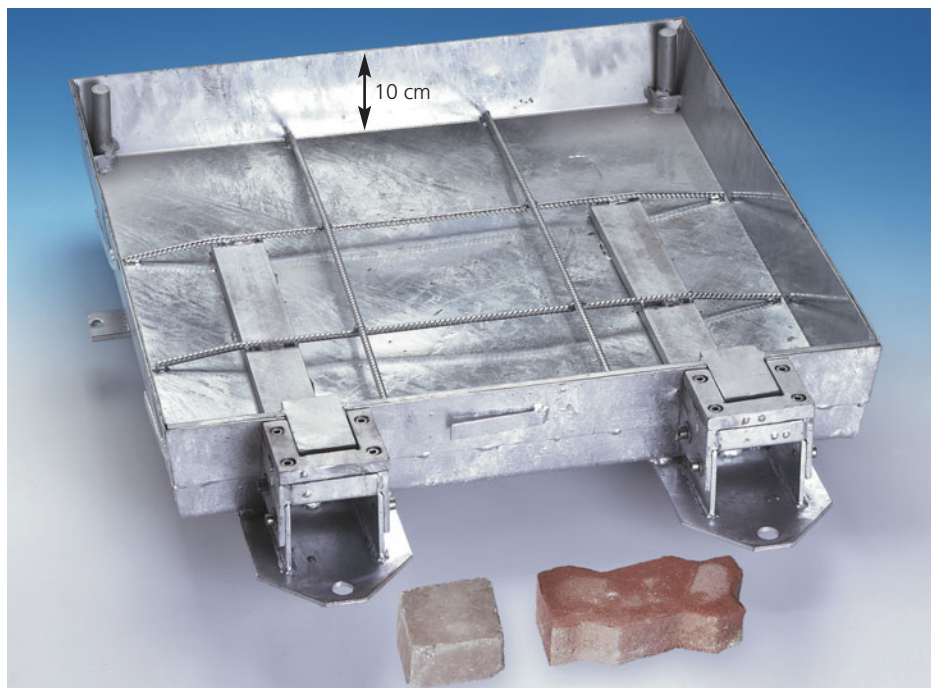
Type	Clear dimensions of shaft (≈ cm)	Outside dimensions (≈ cm)	Weight empty approx.	S/O *
	c x d	A x B		
BVH maxi 44	40 x 40	55.2 x 55.2	22 kg	S
BVH maxi 55	50 x 50	65.2 x 65.2	27 kg	S
BVH maxi 66	60 x 60	75.2 x 75.2	28 kg	S
BVH maxi 86	80 x 60	95.2 x 75.2	35 kg	S
BVH maxi 88	80 x 80	95.2 x 95.2	40 kg	S
BVH maxi106	100 x 60	115.2 x 75.2	40 kg	S
BVH maxi110	100 x 100	115.2 x 115.2	60 kg	S

Cover depth ≈ 10.2 cm
Installation height ≈ 12.5 cm
Special sizes possible
*S = available from stock
*O = to order

Type BVH-maxi steel, scale 1 : 2.5



- 1 Frame
- 2 Cover
- 3 Seal
- 4 Reinforcement
- 5 Allen screw
- 6 Plastic cap
- 7 Anchor



Load capacity: 125 kN test load (EN 124) when filled with a min. 5 cm layer of grade C35/45 concrete (EN 206) (see also pages 3 and 29).

Material: Frame and cover in 2 mm cold-formed precision steel profiles. Hot-dip galvanized. High-load hinges. High-specification double-piston gas struts.

Features: Comfort-lift access cover. Cover with 10 cm deep recess. With peripheral EPDM seal, smell proof and largely water-tight (not guaranteed to be completely water-tight). Opening tools included. Opening is assisted by the patented double-piston gas struts to such an extent that the cover can be opened and closed by one person. Safety device fitted to prevent the open cover from closing.

Applications: For installations which require access without particular effort. Especially for those installations where the cover is to be filled with concrete slabs, bricks, paving stones or paviers etc.

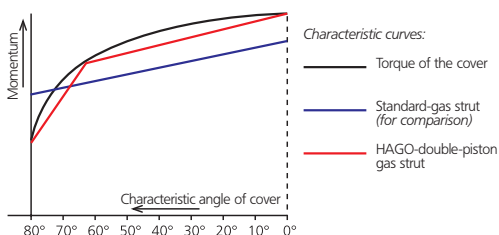
Installation: Please study the enclosed installation instructions **carefully before installation** and pay attention to our specifications. Care must be taken to seal the outer frame into the surrounding flooring. **Important note:** For transport-related reasons, the gas struts are not installed. These should be installed after the cover and frame have been installed and filled (concrete must be set), in the open position in accordance with our installation instructions.

 **Specification clause:** page 30/31



Double-piston gas struts:

The HAGO BVH-GD maxi is fitted with patented, high-specification double-piston gas struts. (Piston 1: high lift capacity, piston 2: low lift capacity). The forces developed by these double-piston gas struts correspond to a kinked characteristic curve. This is closer to the actual force needed to move the cover. This system reduces the effort required when opening and closing. The comfort aspect is particularly useful in the case of heavy covers.



Type		Clear dimensions of shaft (≈ cm)	Outside dimensions without hinge (≈ cm)	Weight empty approx.	S/O *
		c x d	A x B		
BVH-GD maxi	66	60 x 60	75 x 75	52 kg	S
BVH-GD maxi	86	80 x 60	95 x 75	60 kg	O
BVH-GD maxi	88	80 x 80	95 x 95	64 kg	S
BVH-GD maxi	106	100 x 60	115 x 75	65 kg	O

Cover depth ≈ 10.2 cm
Installation height ≈ 12.5 cm

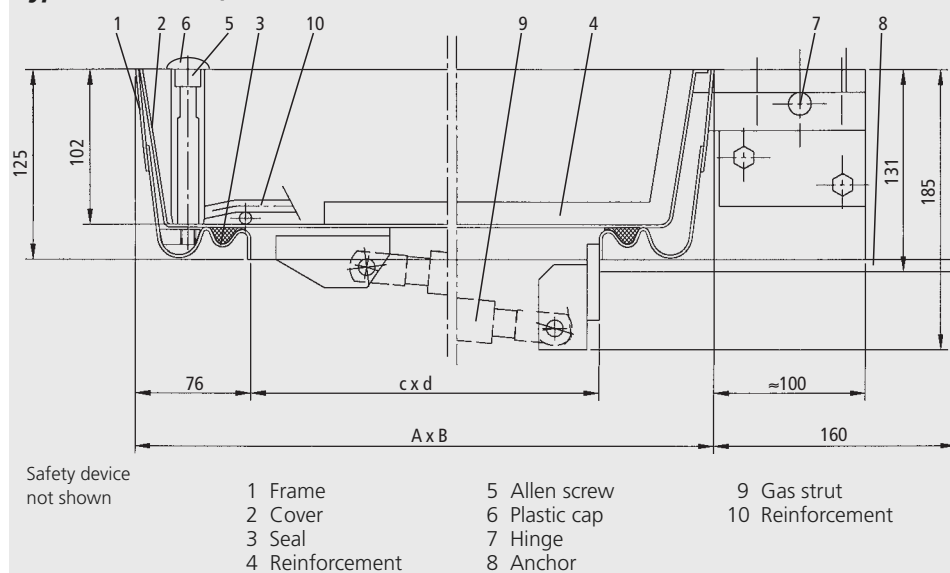
Special sizes possible

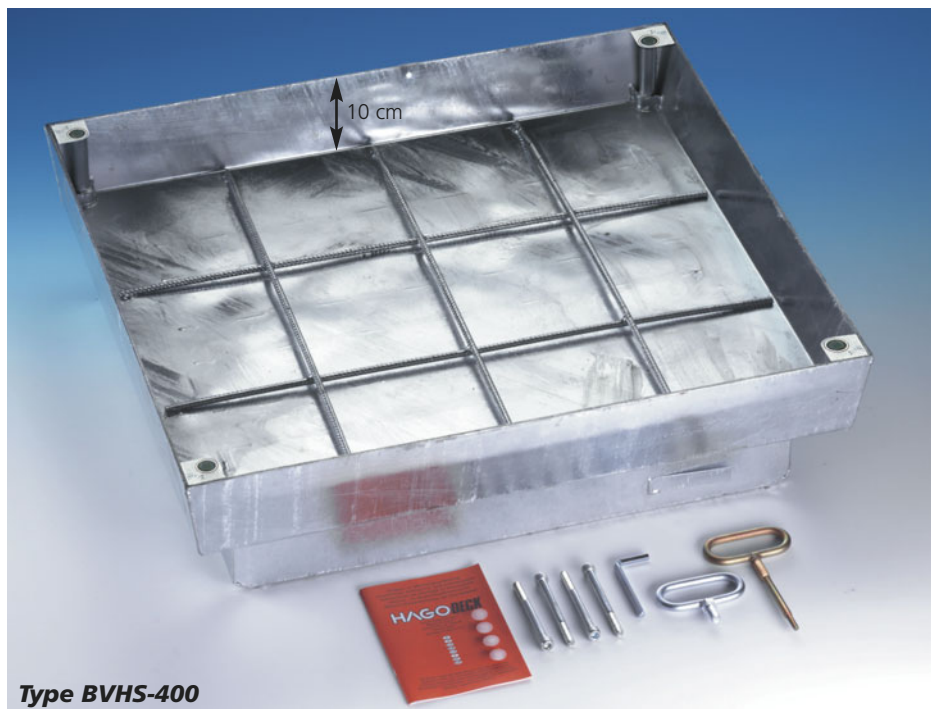
*S = available from stock

*O = to order



Type BVH-GD maxi, scale 1 : 5





Load capacity: 250 kN or 400 kN test load (EN 124) when filled with a min. 5 cm concrete. (see also pages 3 and 29)

Material: Frame and cover made of steel plate, hot-dip galvanised.

Features: Heavy-duty sealed cover with 10 cm deep recess. Underside of cover reinforced with steel girders. In Type BVHS 400, the frame is reinforced with an additional frame. EPDM seal. Robust steel mesh reinforcement.

The Lift-Off opening system: Every HAGODECK Type BVHS cover comes with a set of lifting keys and precise installation instructions. The **HAGO advantage:** jammed covers are released by simply turning the Golden Key.

Applications: For use in vehicle traffic areas in industrial buildings and areas surrounding buildings or for secondary traffic areas (pedestrian zones). Especially for those installations where the cover is to be filled with concrete slabs, bricks, paviors etc.

Installation: Installation must be carried out according to our instructions. With water-tight models, care must be taken to seal the outer frame into the surrounding flooring.

 **Specification clause:** page 30/31



Type BVHS-250
The bottom of the cover is reinforced with I-beam section and flat steel



Type BVHS-400
Bottom with additional frame, reinforced with I-beam section and flat steel

Type	Clear dimensions of shaft (≈ cm)	Outside dimensions (≈ cm)	Weight empty approx.	S/O *
	c x d	A x B		
BVHS 250/ 44	40 x 40	55.2 x 55.2	25 kg	O
BVHS 250/ 55	50 x 50	65.2 x 65.2	30 kg	O
BVHS 250/ 64	60 x 40	75.2 x 55.2	31 kg	O
BVHS 250/ 66	60 x 60	75.2 x 75.2	36 kg	S
BVHS 250/ 88	80 x 80	95.2 x 95.2	61 kg	S
BVHS 250/106	100 x 60	115.2 x 75.2	73 kg	O
BVHS 250/110	100 x 100	115.2 x 115.2	85 kg	O

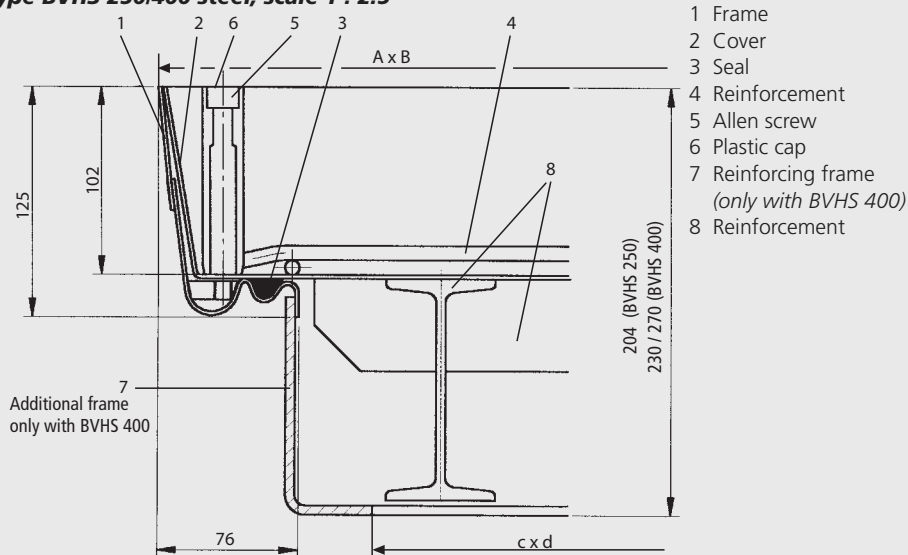
Cover depth ≈ 10.2 cm,
Installation height ≈ 12.5 cm
Steel girders penetrate ≈ 10 cm into the shaft
Special sizes possible
*S = available from stock
*O = to order

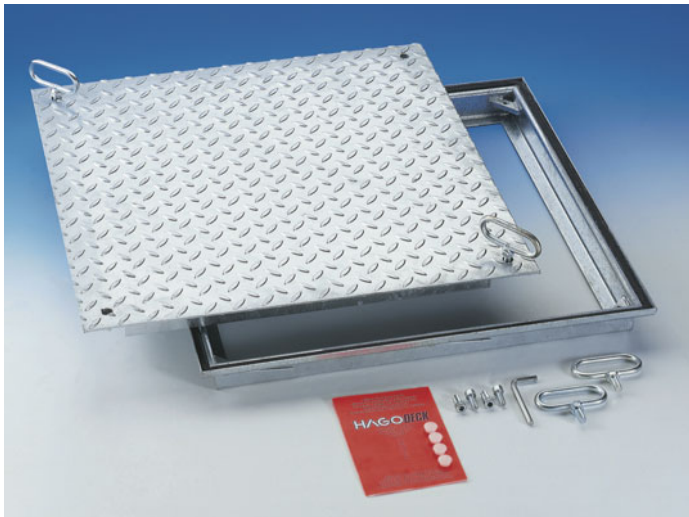
Type	Clear dimensions of shaft (≈ cm)	Outside dimensions (≈ cm)	Weight empty approx.	S/O *
	c x d	A x B		
BVHS 400/ 44	40 x 40	63.2 x 55.2	47 kg	O
BVHS 400/ 55	50 x 50	73.2 x 65.2	56 kg	O
BVHS 400/ 64	60 x 40	83.2 x 55.2	57 kg	O
BVHS 400/ 66	60 x 60	83.2 x 75.2	69 kg	S
BVHS 400/ 88	80 x 80	103.2 x 95.2	90 kg	S
BVHS 400/106	100 x 60	123.2 x 75.2	124 kg	O
BVHS 400/110	100 x 100	123.2 x 115.2	179 kg	O

Cover depth ≈ 10.2 cm
Installation heights: up to BVHS 400/ 88 ≈ 23 cm
BVHS 400/110 ≈ 27 cm

Special sizes possible
*S = available from stock
*O = to order

Type BVHS 250/400 steel, scale 1 : 2.5





Type RV steel:


Load capacity: 15 kN test load EN 124.

Material: Frame made of 2 mm cold formed precision steel profiles. Hot dip galvanised. Durbar-plate cover.

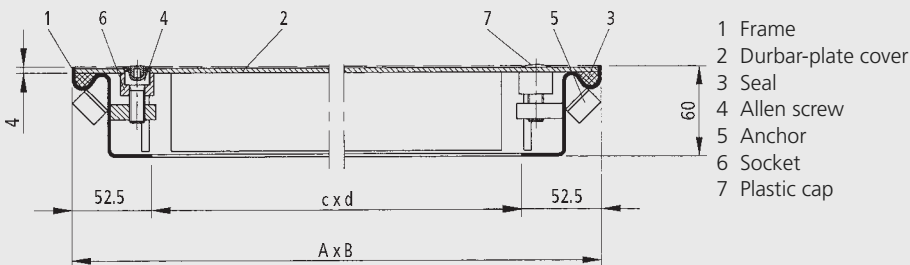
Features: Sealed cover, flat design. EPDM seal. Opening tool included.

Applications: For pedestrian use inside buildings and their surroundings, particularly for inspection chambers.

Installation: Installation must be carried out according to our instructions. With water-tight models, care must be taken to seal the outer frame into the surrounding flooring.

 **Specification clause:** page 30/31

Type RV steel, scale 1 : 5



Type		Clear dimensions of shaft (≈ cm)	Outside dimensions (≈ cm)	Weight approx.	S/O*
		c x d	A x B		
RV 64	60	60 x 40	70.5 x 50.5	22 kg	S
RV 66	60	60 x 60	70.5 x 70.5	29 kg	S
RV 86	80	80 x 60	90.5 x 70.5	37 kg	S
RV 88	80	80 x 80	90.5 x 90.5	45 kg	S

Installation height ≈ 6 cm

Special sizes possible

*S = available from stock

*O = to order



Type RVE stainless steel:

Load capacity: 15 kN test load EN 124.

Material: Frame, plate and reinforcement in grade 304 stainless steel.

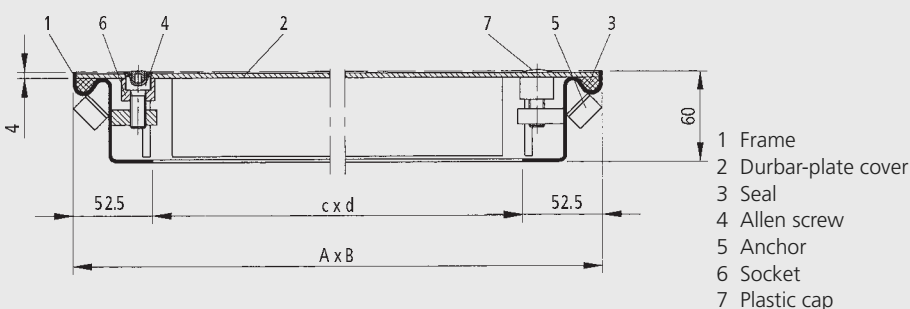
Features: Sealed cover. EPDM seal. Completely rust-proof. Opening tool included.

Applications: For pedestrian use inside buildings and their surroundings, particularly where absolute corrosion-resistance is of great advantage.

Installation: Installation must be carried out according to our instructions. With water-tight models, care must be taken to seal the outer frame into the surrounding flooring.

 **Specification clause:** page 30/31

Type RVE stainless steel, scale 1 : 5



Type		Clear dimensions of shaft (≈ cm)	Outside dimensions (≈ cm)	Weight approx.	S/O*
		c x d	A x B		
RVE 22	20	20 x 20	30.5 x 30.5	6 kg	S
RVE 33	30	30 x 30	40.5 x 40.5	9 kg	S
RVE 44	40	40 x 40	50.5 x 50.5	13 kg	S
RVE 55	50	50 x 50	60.5 x 60.5	15 kg	S
RVE 64	60	60 x 40	70.5 x 50.5	15 kg	S
RVE 66	60	60 x 60	70.5 x 70.5	24 kg	S
RVE 86	80	80 x 60	90.5 x 70.5	30 kg	S
RVE 88	80	80 x 80	90.5 x 90.5	36 kg	S
RVE106	100	100 x 60	110.5 x 70.5	36 kg	S
RVE110	100	100 x 100	110.5 x 110.5	54 kg	S

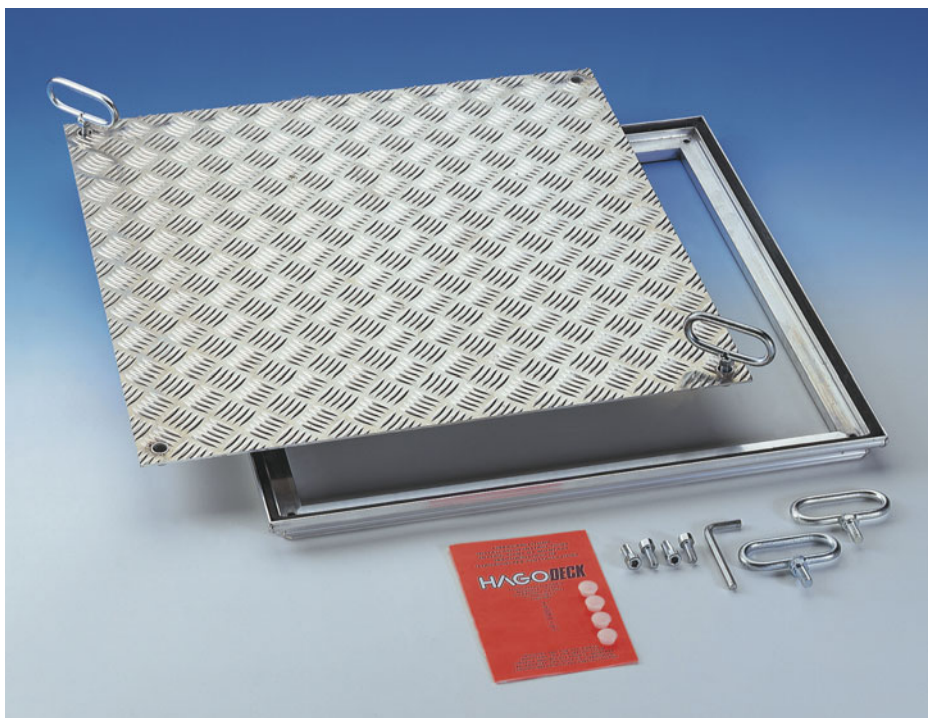
Installation height ≈ 6 cm

Special sizes possible

*S = available from stock

*O = to order

Reinforcement of the bottom can vary, according to the size



Load capacity: 15 kN test load EN 124.

Material: Frame made of aluminium extruded sections. Cover made of 3/5 mm aluminium chequerplate. Aluminium reinforcement to the underside. Stainless steel screws.

Features: Sealed cover. EPDM seal. Completely rust-proof. Light weight. Opening tool included.

Applications: For pedestrian use inside buildings and their surroundings, particularly where corrosion-resistance and/or low weight are of great advantage.

Installation: Installation must be carried out according to our instructions. With water-tight models, care must be taken to seal the outer frame into the surrounding flooring.

 **Specification clause:** page 30/31



Reinforced bottom

Type	Clear dimensions of shaft (≈ cm)	Outside dimensions (≈ cm)	Weight approx.	S/O*
	c x d	A x B		
RVA 22	20 x 20	28.5 x 28.5	2 kg	S
RVA 33	30 x 30	38.5 x 38.5	3 kg	S
RVA 44	40 x 40	48.5 x 48.5	4 kg	S
RVA 55	50 x 50	58.5 x 58.5	5 kg	S
RVA 64	60 x 40	68.5 x 48.5	5 kg	S
RVA 66	60 x 60	68.5 x 68.5	8 kg	S
RVA 86	80 x 60	88.5 x 68.5	10 kg	S
RVA 88	80 x 80	88.5 x 88.5	12 kg	S
RVA106	100 x 60	108.5 x 68.5	12 kg	S
RVA110	100 x 100	108.5 x 108.5	18 kg	S

Installation height ≈ 3.5 cm

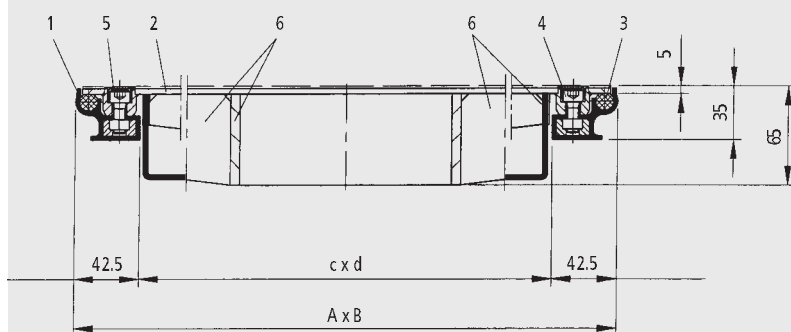
Total height including reinforcement of bottom ≈ 7 cm

Special sizes possible

*S = available from stock

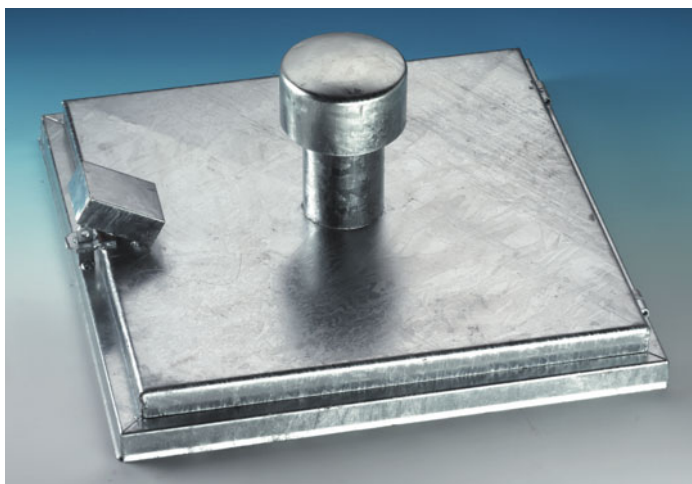
*O = to order

Type RVA alu, scale 1 : 5



Reinforcement of the bottom can vary, according to the size

- 1 Frame
- 2 Cover
- 3 Seal
- 4 Allen screw
- 5 Plastic cap
- 6 Cover reinforcement

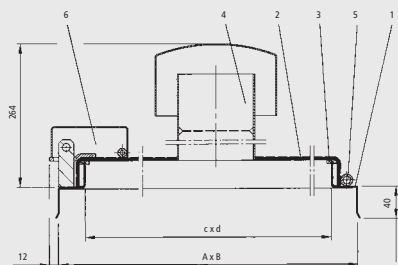


Type BR-D steel:

Material: Steel-plate cover, frame made of cold formed sections. Hot-dip galvanised. With hinge. Cover can be removed from the open position. Covered hasp locking device (*padlock not included*). Ventilation pipe (Ø 10 cm) fitted with cowl and insect-excluding mesh. Sealed with hollow chamber seal.

Applications: For individual wells, spring water catchments, high-level tanks etc.

Type BR-D steel, scale 1 : 10



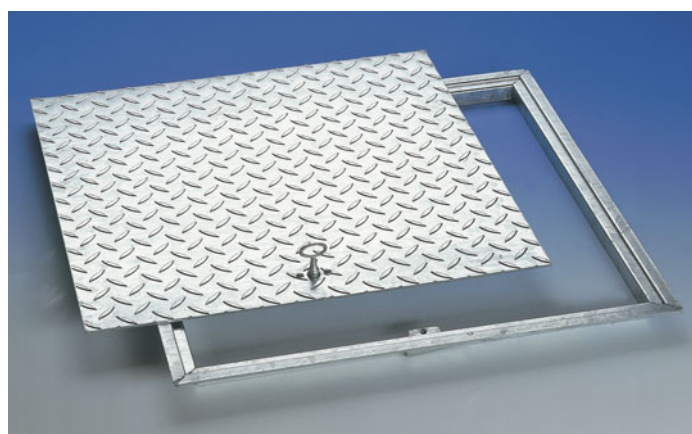
- 1 Frame
- 2 Cover
- 3 Seal
- 4 Ventilation tube with cowl and insect-excluding mesh
- 5 Hinge
- 6 Hasp locking device for padlock with protective cover

Type	Clear dimensions of shaft (≈ cm)	Outside dimensions (≈ cm)	Weight empty approx.	S/O*
	c x d	A x B		
BR-D 55	49.5 x 49.5	56.5 x 56.5	15 kg	S
BR-D 66	59.5 x 59.5	66.5 x 66.5	18 kg	S
BR-D 88	79.5 x 79.5	86.5 x 86.5	21 kg	S

Total height including ventilation cylinder ≈ 30 cm.

*S = available from stock

*O = to order




Type RG steel:

Load capacity: pedestrian

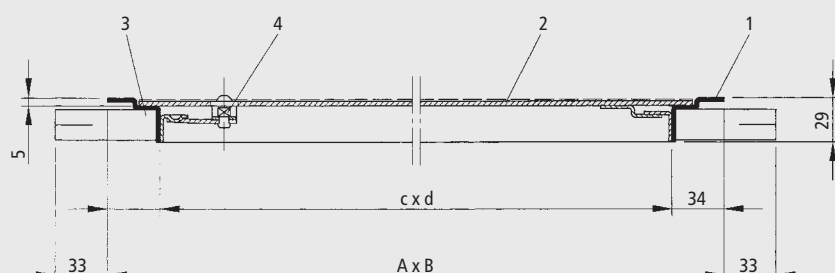
Material: Frame fabricated from rolled sections, durbar-plate cover. Hot dip galvanised.

Features: Simple durbar-plate pedestrian area cover with recessed fastener. Non-sealed cover. Lifting key included.

Applications: For simple covers used subordnately.

 **Specification clause:** page 30/31

Type RG steel, scale 1 : 5



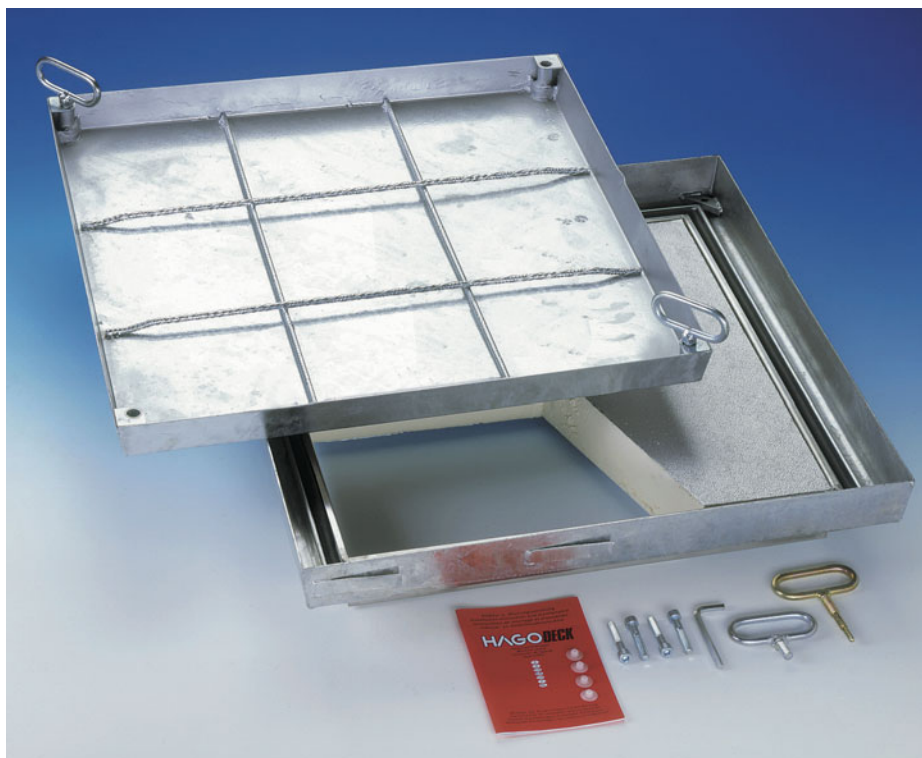
Type	Clear dimensions of shaft (≈ cm)	Outside dimensions (≈ cm)	Weight empty approx.	S/O*
	c x d	A x B		
RG 33	27.3 x 27.3	34 x 34	4 kg	S
RG 44	37.3 x 37.3	44 x 44	6 kg	S
RG 55	47.3 x 47.3	54 x 54	9 kg	S
RG 64	57.3 x 37.3	64 x 44	8 kg	S
RG 66	57.3 x 57.3	64 x 64	12 kg	S
RG 88	77.3 x 77.3	84 x 84	20 kg	S
RG106	97.3 x 57.3	104 x 64	20 kg	S

Installation height ≈ 3 cm

*S = available from stock

*O = to order

- 1 Frame
- 2 Cover
- 3 Anchor
- 4 Recessed fastener



Load capacity: 125 kN test load EN 124
(see also pages 3 and 29).

Material: Frame and cover in 2 mm cold-formed precision steel profiles. Hot-dip galvanised. Insulated version, consisting of: Z-brackets, EPDM seal, polyurethane rigid foam insulation panel coated with aluminium on both sides. Thermal resistance = 3.2 m² K/W Thermal coefficient 0.3 W/m² K (=RC Warde)

Features: Sealed cover with inlaid insulation panel. Tapered design allows easy opening. Virtually invisible when installed. Robust steel mesh reinforcement.

The Lift-Off opening system: Every HAGO DECK Type BV thermo cover comes with a set of lifting keys and precise installation instructions.

The **HAGO advantage:** jammed covers are released by simply turning the Golden Key.

Applications: For areas inside buildings where a cover with insulation properties is required.

Installation: Installation must be carried out according to our instructions. With water-tight models, care must be taken to seal the outer frame into the surrounding flooring.

 **Specification clause:** page 30/31

Type	Clear dimensions of shaft (≈ cm)	Outside dimensions (≈ cm)	Weight empty approx.	S/O *
	c x d	A x B		
BV thermo 55	50 x 50	63.5 x 63.5	19 kg	S
BV thermo 66	60 x 60	73.5 x 73.5	23 kg	S
BV thermo 86	80 x 60	93.5 x 73.5	29 kg	S
BV thermo 88	80 x 80	93.5 x 93.5	33 kg	S
BV thermo106	100 x 60	113.5 x 73.5	33 kg	S
BV thermo110	100 x 100	113.5 x 113.5	45 kg	S

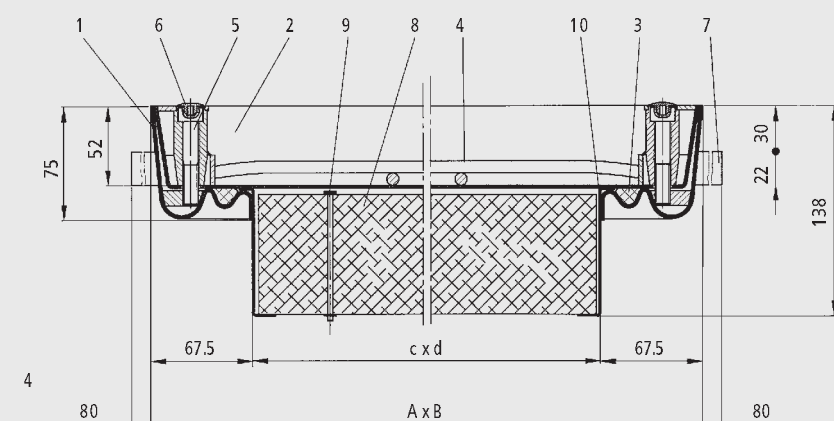
Cover depth ≈ 5.0 cm
Installation height ≈ 7.5 cm
Insulation panel penetrates ≈ 6.3 cm into the shaft.

Special sizes possible

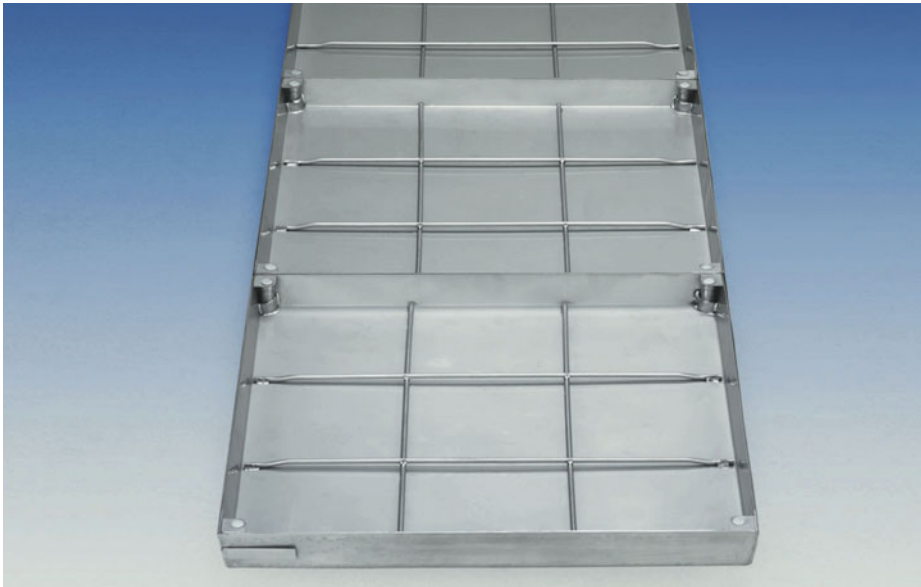
*S = available from stock

*O = to order

Type BV thermo, scale 1 : 5



- | | |
|-----------------|---------------------------------------|
| 1 Frame | 7 Anchor |
| 2 Cover | 8 Insulation plate in Z-bracket |
| 3 Seal | 9 Lifting handle for insulation plate |
| 4 Reinforcement | 10 Alu Z-bracket |
| 5 Allen screw | |
| 6 Plastic cap | |



Load capacity: 125 kN test load EN 124 when completely filled with concrete C35/45 (EN 206-1).

Material: In Type BV-RA frame, cover and cross-beam in 2 mm cold-formed precision steel profiles. Hot-dip galvanised. In Type BVE-RA frame, cover and cross-beam made of grade 304 stainless steel (on request also available in grade 316 stainless steel). EPDM seal.

Features: Smell proof, largely water-tight multi-part cover (Not guaranteed to be completely water-tight). The cross-beams can be removed without tools, to give clear access to the entire duct. This gives clear access to the duct when retrofitting pipes or during repair work.

Versions: In addition to the standard cover height (approx. 50 mm), a deep cover version (approx. 100 mm) is available. Ideal for infill with paviers.

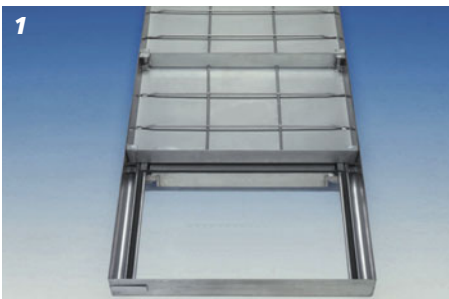
The Lift-Off opening system: Every HAGODECK Type BV(E)-RA cover comes with a set of lifting keys and precise installation instructions. The **HAGO advantage:** jammed covers are released by simply turning the Golden Key.

Applications: Ideal cover for supply and disposal ducts in the industrial and workshop sector, e.g. for energy, water and compressed air supply.

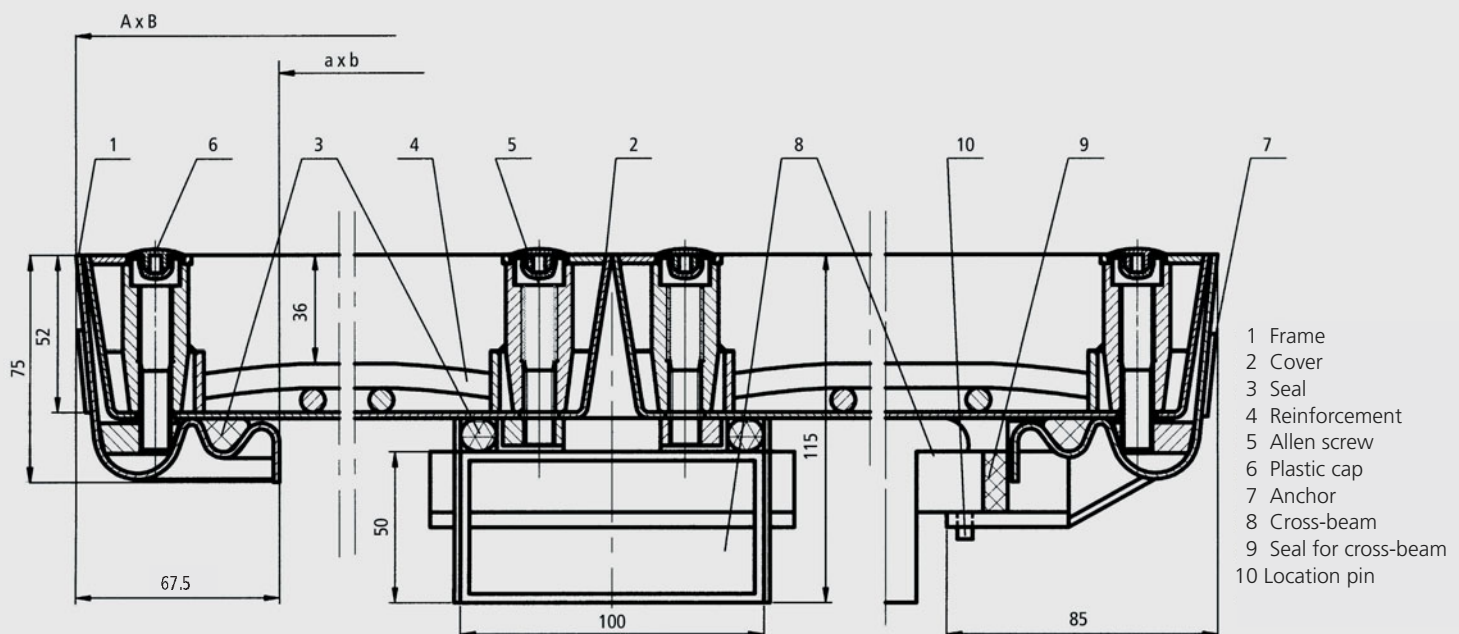
Installation: Installation must be carried out according to our instructions. With water-tight models, care must be taken to seal the outer frame into the surrounding flooring.

 **Specification clause:**
page 30/31

1 Figure 1: Cover removed
2 Figure 2: Removing a cross-beam



Type BV-RA steel / BVE-RA stainless steel, scale 1 : 2.5





Applications: Ideal cover for supply and disposal ducts in the industrial and workshop sector, e.g. for energy, water and compressed air supply.

Installation: Installation must be carried out according to our instructions. With water-tight models, care must be taken to seal the outer frame into the surrounding flooring.



Specification clause: page 30/31

Type	Clear dimensions of shaft (≈ cm)	Outside dimensions (≈ cm)	Weight empty approx.	S/O*
	c x d	A x B		
BVA-RA multi 2-part	60 x 132	72 x 144	23 kg	S
BVA-RA multi 3-part	60 x 203	72 x 215	32 kg	S
BVA-RA multi 2-part	80 x 172	92 x 184	33 kg	S
BVA-RA multi 3-part	80 x 263	92 x 275	47 kg	S

Cover depth ≈ 6.6 cm

Installation height ≈ 7.6 cm

Cross-beams penetrate ≈ 12.5 cm into the shaft.

These 4 standard sizes (additional designation: multi) are in stock. Otherwise, Type BVA-RA is manufactured according to your size specifications.

*S = available from stock

*O = to order

Type BVA-RA
before installation

Type BVA-RA multi-part cover
in the Viniculture museum in Krems (supply shaft)

Load capacity: 125 kN test load EN 124 (see also pages 3 and 29).

Material: Frame and cover sections in extruded aluminium.

Features: BVA-RA alu largely sealed (design similar to BVA): New modular system with huge advantages. The frames are joined lengthways to special connecting elements. For larger covers (from a length of approximately 3 m), the HAGODECK multi-part cover is delivered disassembled, ready for assembly on site.

Patented cross-beams: The cross-beam system is registered as Patent no. 396796. The cross-beams can be easily removed without tools, to give clear access to the entire duct. Cross-beams are easy to insert and fix in place. They can be taken out again very easily if the entire duct needs to be freely accessible, e.g. when retrofitting pipes or when undertaking repair work in the duct.

The Lift-Off opening system: Every HAGODECK Type BVA-RA alu cover comes with a set of lifting keys and precise installation instructions. The **HAGO advantage:** jammed covers are released by simply turning the Golden Key.

Sealed cover: HAGODECK Type BVA-RA alu is largely sealed. Since multi-part covers are often complex or more difficult to install, water ingress can occur if there is constant stress due to rain, melt water or wet conditions. (Not guaranteed to be completely water-tight.)

In all cases please consult our technical advisers if your multi-part cover needs to be completely sealed. In these cases, we will usually find a solution by taking additional measures and providing specific installation instructions.





Detail: junction

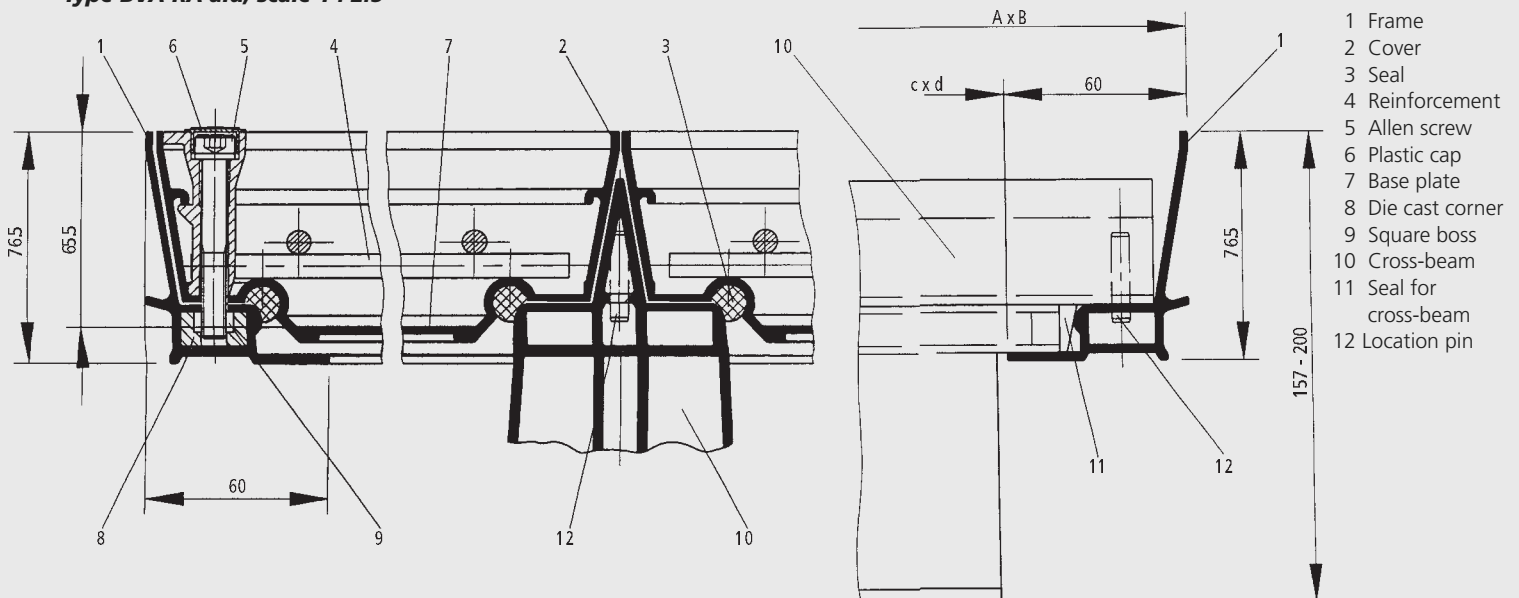


Multi-part cover for cable duct



Detail: cross-beam

Type BVA-RA alu, scale 1 : 2.5



What has to be done when installing HAGO access covers to ensure watertightness?

Cover: In our sealed versions in steel or stainless steel, the cover is already designed to be watertight. In our fillable aluminium covers (e.g. BVA), the base plate is only spot-welded for technical reasons (*distortion*). Here it is important that the concrete infill provides a seal (*concrete should be shaken and well-compressed*), if the cover is to be optimally watertight.

Frame: With water-tight models, care must be taken to seal the outside of the frame into the surrounding flooring (*use concrete with waterproofing additives*). If the covers are to be installed in areas where a high degree of watertightness is required, please always ask for our advice.

Can HAGO covers be concreted directly into in-situ concrete floors?

When fitting directly into industrial floors, it must be noted that these expand. If necessary fit flexible spacers (*min. width 10 mm*) around the outside of the frame. These can be removed when the floor has hardened. The resulting gap can subsequently be filled with the most suitable flexible material.

Can square access covers be installed onto a round shaft opening?

No problem, just make a square concrete rim around the round opening. This has to correspond to at least the outside dimensions of the access cover.

How frequently should the seals on HAGO access covers be renewed?



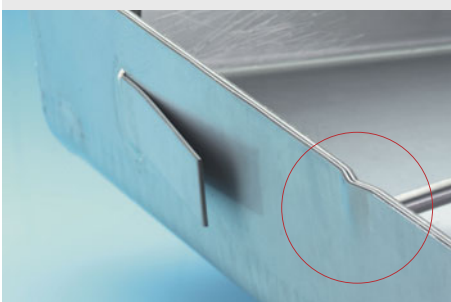
Our EPDM seals are very long-lasting when used appropriately. However, if watertightness is an important criterion for you, we would request you to consider the seals to be a part which is subject to wear and tear, and to check their condition regularly.

If the cover is opened and closed particularly often (e.g. models with gas struts), or if the seal is subjected to dirt, its lifespan is reduced.

If your seal appears damaged or no longer flexible, we recommend that you order a replacement seal from **HAGO** (*giving details of the cover model and size*). Replacement seals are always delivered with suitable glue and instructions for changing the seal.

(Photo: Replacement seal with glue and instructions)

Some HAGO access covers have a small notch on one side (of the cover and frame). What is this for?



This notch is found on our steel or stainless steel covers without hinges.

We produce our covers with very little tolerance and gap dimensions. The cover and frame are then (*after galvanising or passivating*) optimally realigned. The notch serves as a marker, so that this optimal fit is not later lost by placing the cover into the frame the wrong way. For an optimal fit, the notch in the cover should find the notch in the frame! The **HAGO** notch is seen today as a sign of quality.

(Photo: Type BVE with notch and anchor.)

Should the joints around the access cover be grouted with silicone?

For models with gas struts, silicone grouting is required. With all other models, grouting with silicone around the frame is a neat solution but is not absolutely necessary.

Can I fill HAGO covers with asphalt?

HAGO covers with standard installation depth should never be filled with asphalt. If you require an asphalt surface, please use our models with a 10 cm high cover (BVH-maxi, BVH-GD-maxi, BVHS 250/400). In this case, the cover has to be filled with approx. 7 cm of concrete, the rest can be filled with asphalt.

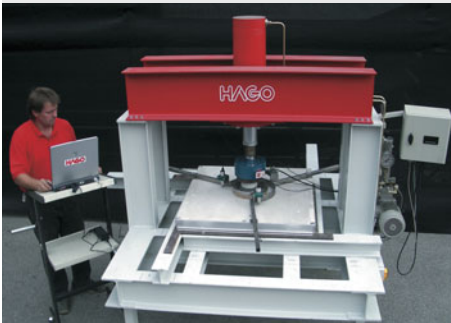
Does "125 kN test load" mean that the HAGO cover can be subjected to a wheel load of 125 kN (12.5t) or to a load of 125 kN (12.5t) per square metre?

A very important question, as "125 kN test load" or "B 125" refers to neither the wheel load nor to the load capacity per square metre. The basis is the European Standard EN 124. It divides possible installation locations of access covers into 6 groups. Group 2 includes: footways, pedestrian zones, car parks or car parking decks.

For these areas (Group 2), the Standard provides for the installation of access covers of class B 125 (125 kN test load). Access covers are classified as B 125 with regard to load capacity if no cracks (in simplified terms) are produced by up to 125 kN force on the test rig (25 cm diameter block).

This test procedure according to EN 124 thus serves to classify access covers. **HAGO** access covers should, however, never be subjected to the indicated test load in normal usage.

The European Standard EN 124 does not give a direct indication of the actually possible load in kN or tonnes. However, as a rough guideline it can be said that **HAGO** covers with "125 kN test load" - when fully filled with grade C 35/45 concrete - can be slowly driven over with a maximum 3 tonnes wheel load (air-inflated tyres). That corresponds to the maximum wheel loads which can be expected in car parks or car parking decks.



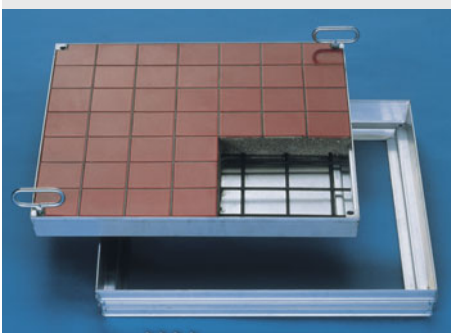
(Photo: loading test)

How does the load capacity change if HAGO access covers are not completely filled with concrete, but the surface is covered with tiles/blocks or a floor finish (1-2 cm)?

In this case, the load capacity is reduced depending on the thickness and type of the floor finish.

For normal loading in pedestrian areas, **HAGO** access covers are of course also suitable when filled with blocks, tiles etc. However, the thickness of the floor finish should not exceed 2 cm.

When filling with blocks, if particular requirements are specified for the load capacity (vehicles, heavy machinery), please ask for our advice.



(Photo: Type BVA partially filled with tiles)

Specification clauses

HAGODECK Type BV (galvanised steel)

Access cover with Golden Key Lift Off opening tool, Type **HAGODECK BV**, clear opening x cm, suitable for infilling with the architect's choice of floor finish. Hot-dip galvanised steel, sealed, 125 kN (EN 124), unobtrusive corner joints (max. visible surface 35 x 35 mm). Installation shall be according to the manufacturer's instructions. Manufacturer: **HAGO** A-4600 Wels, Austria www.hago.at

HAGODECK Type B (galvanised steel)

Access cover with Golden Key Lift Off opening tool, Type **HAGODECK B**, clear opening x cm, suitable for infilling with the architect's choice of floor finish. Galvanised steel, normal version (non-sealed), 125 kN (EN 124), unobtrusive corner joints (max. visible surface 35 x 35 mm). Installation shall be according to the manufacturer's instructions. Manufacturer: **HAGO** A-4600 Wels, Austria www.hago.at

HAGODECK Type BVA (aluminium)

Access cover with Golden Key Lift Off opening tool, Type **HAGODECK BVA**, clear opening x cm, suitable for infilling with the architect's choice of floor finish. Aluminium, sealed, 125 kN (EN 124), unobtrusive corner joints (max. visible surface 30 x 30 mm). Stainless steel screws. Installation shall be according to the manufacturer's instructions. Manufacturer: **HAGO** A-4600 Wels, Austria www.hago.at

HAGODECK Type BVE (stainless steel)

Access cover with Golden Key Lift Off opening tool, Type **HAGODECK BVE**, clear opening x cm, suitable for infilling with the architect's choice of floor finish. Grade 304 stainless steel, passivated, sealed, 125 kN (EN 124), unobtrusive corner joints (max. visible surface 35 x 35 mm). Installation shall be according to the manufacturer's instructions. Manufacturer: **HAGO** A-4600 Wels, Austria www.hago.at

HAGODECK Type BV shallow (galvanised steel)

HAGODECK Type BVE shallow (stainless steel)

Access cover with Golden Key Lift Off opening tool, Type **HAGODECK BV shallow/BVE shallow**, clear opening x cm, suitable for infilling with the architect's choice of floor finish. Shallow design (max. installation depth 5 cm); BV steel: hot-dip galvanised steel, BVE stainless steel: Grade 304 stainless steel, passivated, sealed, for pedestrian traffic, unobtrusive corner joints, (max. visible surface 30 x 30 mm). Installation shall be according to the manufacturer's instructions. Manufacturer: **HAGO** A-4600 Wels, Austria www.hago.at

HAGODECK Type BV-F90 (galvanised steel)

Access cover with Golden Key Lift Off opening tool, Type **HAGODECK BV-F90**, clear opening x cm, suitable for infilling with the architect's choice of floor finish. Fire-resistant version classified in accordance with EN 13502-2: REI 90 (with test certificate), hot-dip galvanised steel, smell proof, 125 kN (EN 124), unobtrusive corner joints (max. visible surface 35 x 35 mm). Installation shall be according to the manufacturer's instructions. Manufacturer: **HAGO** A-4600 Wels, Austria www.hago.at

HAGODECK Type BVS 250 (galvanised steel)

Access cover with Golden Key Lift Off opening tool, Type **HAGODECK BVS 250**, clear opening x cm, suitable for infilling with the architect's choice of floor finish. Hot-dip galvanised steel, sealed, 250 kN (EN 124), unobtrusive corner joints (max. visible surface 35 x 35 mm). Installation shall be according to the manufacturer's instructions. Manufacturer: **HAGO** A-4600 Wels, Austria www.hago.at

HAGODECK Type BVS 400 (galvanised steel)

Access cover with Golden Key Lift Off opening tool, Type **HAGODECK BVS 400**, clear opening x cm, suitable for infilling with the architect's choice of floor finish. Hot-dip galvanised steel, sealed, 400 kN (EN 124), unobtrusive corner joints (max. visible surface 35 x 35 mm). Installation shall be according to the manufacturer's instructions. Manufacturer: **HAGO** A-4600 Wels, Austria www.hago.at

HAGODECK Type BV-GD automatic (galvanised steel)

Access cover with Golden Key Lift Off opening tool, Type **HAGODECK BV-GD automatic**, clear opening x cm, suitable for infilling with the architect's choice of floor finish. With flush-to-floor hinge and gas strut(s) for assisted opening, hot-dip galvanised steel, largely sealed, 125 kN (EN 124), unobtrusive corner joints (max. visible surface 35 x 35 mm). Installation shall be according to the manufacturer's instructions. Manufacturer: **HAGO** A-4600 Wels, Austria www.hago.at

HAGODECK Type BVE-GD (stainless steel)

Access cover with Golden Key Lift Off opening tool, Type **HAGODECK BVE-GD automatic**, clear opening x cm, suitable for infilling with the architect's choice of floor finish. With flush-to-floor hinge and gas strut(s) for assisted opening, grade 304 stainless steel, largely sealed, 125 kN (EN 124), unobtrusive corner joints (max. visible surface 35 x 35 mm). Installation shall be according to the manufacturer's instructions. Manufacturer: **HAGO** A-4600 Wels, Austria www.hago.at

HAGODECK Type BV-GDZ automatic (galvanised steel)

Access cover with Golden Key Lift Off opening tool, Type **HAGODECK BV-GDZ automatic**, clear opening x cm, suitable for infilling with the architect's choice of floor finish. With flush-to-floor hinge and gas strut(s) for assisted opening, with central locking system, hot-dip galvanised steel, largely sealed, 125 kN (EN 124), unobtrusive corner joints (max. visible surface 35 x 35 mm). Installation shall be according to the manufacturer's instructions. Manufacturer: **HAGO** A-4600 Wels, Austria www.hago.at

HAGODECK Type BVH maxi (galvanised steel)

Access cover with Golden Key Lift Off opening tool, Type **HAGODECK BVH maxi**, clear opening x cm, suitable for infilling with the architect's choice of floor finish. With 10 cm deep recess, hot-dip galvanised steel, sealed, 125 kN (EN 124), with corner joints. Installation shall be according to the manufacturer's instructions. Manufacturer: **HAGO** A-4600 Wels, Austria www.hago.at

HAGODECK Type BVH-GD maxi (galvanised steel)

Access cover with Golden Key Lift Off opening tool, Type **HAGODECK BVH-GD maxi**, clear opening x cm, suitable for infilling with the architect's choice of floor finish. With 10 cm deep recess, with hinges and gas struts for assisted opening, hot-dip galvanised steel, largely sealed, 125 kN (EN 124), with corner joints. Installation shall be according to the manufacturer's instructions. Manufacturer: **HAGO** A-4600 Wels, Austria www.hago.at

HAGODECK Type BVHS 250 (galvanised steel)

Access cover with Golden Key Lift Off opening tool, Type **HAGODECK BVHS 250**, clear opening x cm, suitable for infilling with the architect's choice of floor finish. With 10 cm deep recess, hot-dip galvanised steel, sealed, 250 kN (EN 124), with corner joints. Installation shall be according to the manufacturer's instructions. Manufacturer: **HAGO** A-4600 Wels, Austria www.hago.at

HAGODECK Type BVHS 400 (galvanised steel)

Access cover with Golden Key Lift Off opening tool, Type **HAGODECK BVHS 400**, clear opening x cm, suitable for infilling with the architect's choice of floor finish. With 10 cm deep recess, hot-dip galvanised steel, sealed, 400 kN (EN 124), with corner joints. Installation shall be according to the manufacturer's instructions. Manufacturer: **HAGO** A-4600 Wels, Austria www.hago.at

HAGODECK Type RV (galvanised steel)

Durbar-plate access cover including opening tool, Type **HAGODECK RV**, clear opening x cm. Hot-dip galvanised steel, sealed, 15 kN (EN 124). Installation shall be according to the manufacturer's instructions. Manufacturer: **HAGO** A-4600 Wels, Austria www.hago.at

HAGODECK Type RVE (stainless steel)

Durbar-plate access cover with Golden Key Lift Off opening tool, Type **HAGODECK RVE**, clear opening x cm. Grade 304 stainless steel, sealed, 15 kN (EN 124). Installation shall be according to the manufacturer's instructions. Manufacturer: **HAGO** A-4600 Wels, Austria www.hago.at

HAGODECK Type RVA (aluminium)

Access cover with chequerplate with Golden Key Lift Off opening tool, Type **HAGODECK RVA**, clear opening x cm. Aluminium, sealed, stainless steel screws. 15 kN (EN 124). Installation shall be according to the manufacturer's instructions. Manufacturer: **HAGO** A-4600 Wels, Austria www.hago.at

HAGODECK Type RG (galvanised steel)

Durbar-plate access cover including opening tool, Type **HAGODECK RG**, clear opening x cm. Hot-dip galvanised steel, non-sealed, for pedestrian traffic. Installation shall be according to the manufacturer's instructions. Manufacturer: **HAGO** A-4600 Wels, Austria www.hago.at

HAGODECK Type BV thermo (galvanised steel)

Access cover with Golden Key Lift Off opening tool, Type **HAGODECK BV thermo**, clear opening x cm, suitable for infilling with the architect's choice of floor finish. Insulated version with insulation panel [min. 0.3 W/m² K (=RC Warde)], hot-dip galvanised steel, sealed, 125 kN (EN 124), unobtrusive corner joints (max. visible surface 35 x 35 mm). Installation shall be according to the manufacturer's instructions. Manufacturer: **HAGO** A-4600 Wels, Austria www.hago.at

HAGODECK Type BV-RA (galvanised steel)

HAGODECK Type BVE-RA (stainless steel)

Access cover with Golden Key Lift Off opening tool, Type **HAGODECK BV-RA/BVE-RA**, clear opening x cm, suitable for infilling with the architect's choice of floor finish. Multiple covers with removable cross-beam (without tools); BV-RA: galvanised steel, BVE-RA: Grade 304 stainless steel, largely sealed, 125 kN (EN 124), unobtrusive corner joints (max. visible surface 30 x 30 mm). Installation shall be according to the manufacturer's instructions. Manufacturer: **HAGO** A-4600 Wels, Austria www.hago.at

HAGODECK Type BVA-RA alu (aluminium)

Multi-part cover with Golden Key Lift Off opening tool, Type **HAGODECK BVA-RA**, clear opening x cm, suitable for infilling with the architect's choice of floor finish. Multiple covers with removable cross-beam (without tools); aluminium, largely sealed, 125 kN (EN 124), unobtrusive corner joints (max. visible surface 30 x 30 mm). Installation shall be according to the manufacturer's instructions. Manufacturer: **HAGO** A-4600 Wels, Austria www.hago.at



Delivery times:

It is our policy to keep ample stock. Please refer to the column **S/O** in the model tables:

Items marked **S** (= available from stock) are normally available (non-compulsory) and can be dispatched at short notice or collected from **HAGO** Wels (and usually from **HAGO** Vienna).

With items marked **O** (= to order), or special sizes to suit your particular needs, please ask **HAGO** about precise delivery times.

Important note regarding the specification clauses

- Covers must be completely filled with concrete to category C 35/45 (EN 206), (BVH-maxi, BVH-GD maxi and BVHS 250/400, 5 cm of concrete layer), if the cover is to achieve the specified test load.
- Where sealed covers are specified, care must be taken to seal the outer frame into the surrounding floor.
- If using mastic asphalt, or in the case of floors with above-average expansion or floors which have significantly different characteristics from concrete floors, specific installation instructions should be obtained from the manufacturer.

Technical changes and dimensional changes are possible as a result of general progress and new findings. If, in a particular case, precise dimensional accuracy is absolutely essential for a successful installation, please confirm the dimensions to us in writing.

Other products from HAGO:



TECHNICAL BUILDING PRODUCTS

Main office:

HAGO Bautechnik GmbH
A-4600 Wels, Traklstraße 19
Austria

Phone ++43 (0) 72 42 / **66 3 41-0**

Fax ++43 (0) 72 42 / **66 3 41-23**

Email: office@hago.at

www.hago.at